



EXPO  
2020  
DUBAI  
UAE



# Expo 2020 Dubai Zimbabwe National Day Business Forum Projects Brochure

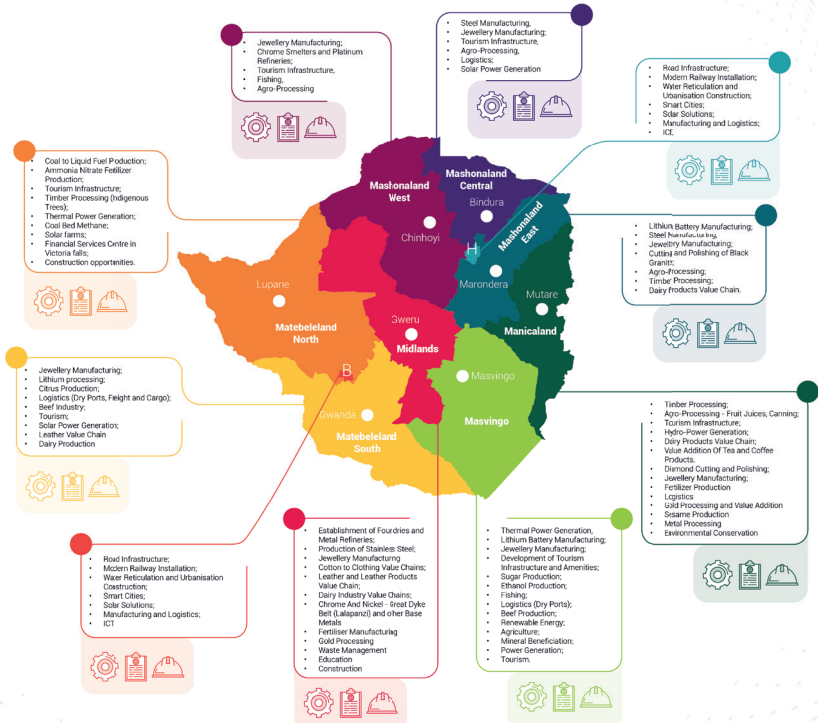
---





# Investment Map

- Key**
- Harare
  - Bulawayo
  - Mash West
  - Mash Central
  - Mash East
  - Manicaland
  - Masvingo
  - Midlands
  - Mat South
  - Mat North





**ZIDA**  
ZIMBABWE  
INVESTMENT &  
DEVELOPMENT  
AGENCY

Unearthing **Potential!**

# AGRICULTURE AND FOOD PROCESSING PROJECTS

---



# Agriculture and Food Processing Sector: Agriculture



Project Title:	Sable Chemicals Fertilizer Plant Upgrade
Project Description:	The project entails upgrading of the fertilizer processing plant from the old electrolysis to new low cost technologies
Project location:	Kariba
Lead Agency/ Project Promoter:	Sable Chemicals
Current Status/ stage of Project:	The project is operational
Actions Required/ Implementation Arrangements/ Contract Type:	Joint Venture
Availability of Pre-feasibility Studies, Feasibility studies, and other Studies:	Preliminary feasibility study available
Estimated Cost of the Project:	USD 400 million
Investment required	
Project Financial Position:	To be shared with interested investors
Period of Implementation:	24 months

# Agriculture and Food Processing Sector: Agriculture



<b>Project Title:</b>	<b>Sable Dairy Farms</b>
<b>Project Description:</b>	To establish a 5,000ha dairy farm aimed at producing 65 million litres of milk per annum by the year 2025.
<b>Project location:</b>	Sherwood Midlands Kwekwe, Zimbabwe
<b>Lead Agency/ Project Promoter:</b>	Sable Chemicals
<b>Actions Required/ Implementation</b>	<ul style="list-style-type: none"> <li>• Letter of Support and endorsement from the Government of Zimbabwe – Completed</li> <li>• Partners</li> <li>• Finalization of feasibility study</li> <li>• Finalization of project funding –</li> </ul>
<b>Arrangements/ Contract Type:</b>	
<b>Project Cost</b>	• USD65 million
<b>Project Status</b>	• Preliminary feasibility study done

<b>Project Title:</b>	<b>GMB Grain Driers</b>
<b>Project Description:</b>	To establish grain driers with capacity to process 500MT per day
<b>Project location:</b>	Across the country
<b>Lead Agency/ Project Promoter:</b>	GMB
<b>Actions Required/ Implementation</b>	<ul style="list-style-type: none"> <li>• Support and endorsement from the Government of Zimbabwe – Completed</li> <li>• Finalization of feasibility study</li> <li>• Partners</li> </ul>
<b>Arrangements/ Contract Type:</b>	• Joint Venture, Loan, BOT BOOT
<b>Project Cost</b>	• USD3 million
<b>Project Status</b>	• Preliminary feasibility study done

# Agriculture and Food Processing Sector: Agriculture



<b>Project Description:</b>	To establish new steel silos with capacity of 50,000MT
<b>Project location:</b>	Across the country
<b>Lead Agency/ Project Promoter:</b>	GMB
<b>Lead Agency/ Project Promoter:</b>	Sable Chemicals
<b>Actions Required/ Implementation</b>	<ul style="list-style-type: none"> <li>• Support and endorsement from the Government of Zimbabwe – Completed</li> <li>• Finalization of feasibility study</li> <li>• Partners</li> </ul>
<b>Arrangements/ Contract Type:</b>	<ul style="list-style-type: none"> <li>• Joint Venture, Loan, BOT BOOT</li> </ul>
<b>Project Cost</b>	<ul style="list-style-type: none"> <li>• USD20 million</li> </ul>
<b>Project Status</b>	<ul style="list-style-type: none"> <li>• Preliminary feasibility study done</li> </ul>

<b>Project Title:</b>	<b>Beitbridge Juicing Citrus Estate</b>
<b>Project Description:</b>	The project entails development of a 4,000 HA citrus estate mainly for export
<b>Project location:</b>	Beitbridge
<b>Lead Agency/ Project Promoter:</b>	Beitbridge Juicing
<b>Contact</b>	
<b>Current Status/ stage of Project:</b>	
<b>Actions Required/ Implementation Arrangements/ Contract Type:</b>	Joint Venture
<b>Availability of Pre-feasibility Studies, Feasibility studies, and other Studies:</b>	Feasibility study available
<b>Estimated Cost of the Project:</b>	USD 66 million
<b>Investment required</b>	
<b>Project Financial Position:</b>	To be shared with interested investors.
<b>Period of Implementation:</b>	24 months

# Agriculture and Food Processing

## Sector: Agriculture



Project Title:	Supply of Agriculture Inputs, Mechanization And Irrigation Equipment
Project Description:	<ul style="list-style-type: none"> <li>• Financing and supply of agriculture inputs, mechanization and irrigation equipment through government programmes</li> <li>• Setting up private entities or joint ventures for supply and dealership of fertilizers, chemicals, agriculture machinery, irrigation and equipment</li> </ul>
Project location:	
Lead Agency/ Project Promoter:	Ministry of Lands, Agriculture, Water, Fisheries Climate and Rural Resettlement (MLAW-CRR)
Contact	Ministry of Lands, Agriculture, Water, Climate and Rural Resettlement
Actions Required/ Implementation Arrangements/ Contract Type:	<ul style="list-style-type: none"> <li>• Loan, Supply Contracts (or Both)</li> <li>• Private Enterprises / Joint Venture</li> </ul>

# Agriculture and Food Processing

## Sector: Agriculture



Project Title:	Primary Crop and Livestock Production
Project Description:	<p><b>Establish Corporate Farming Ventures</b></p> <ul style="list-style-type: none"> <li>Greenfield projects for food and cash crop production</li> <li>Horticulture, game, wildlife, livestock, poultry and fishfarming</li> </ul> <p><b>Establish Joint Farming Businesses</b></p> <ul style="list-style-type: none"> <li>Contract production and marketing of produce</li> <li>Joint ventures with A1, A2 farmers and Parastatals on existing farms (ARDA, Cottco)</li> <li>BOT, BOOT, DOT arrangements for land and infrastructure development for farming on new land</li> </ul>
Project location:	Nationwide
New land in (Tokwe Mkosi, Kazungula, Bulawayo, Muzarabani, Kanyemba, Mkwesine, Chisumbanje)	Beitbridge Juicing
Lead Agency/ Project Promoter:	Ministry of Lands, Agriculture, Water, Climate and Rural Resettlement (MLAWCRR)
Contact:	Ministry of Lands, Agriculture, Water, Fisheries, Climate and Rural Resettlement
Actions Required/ Implementation Arrangements/ Contract Type:	<ul style="list-style-type: none"> <li>Public Private Partnership (PPP)</li> <li>Private Equity</li> </ul>



# Agriculture and Food Processing Sector: Agriculture



<b>Project Title:</b>	<b>37,000 Hectare Cotton Project</b>
<b>Project Description:</b>	<p><b>Project activities include:</b></p> <ul style="list-style-type: none"> <li>• Development of 37 000Ha of cotton over a period of 5 years on the west bank of the Lower Sabi opposite Chisumbanje Estate</li> <li>• Irrigation Development:             <ul style="list-style-type: none"> <li>o Construction of Chitowe Barrage and Diversion works, transfer and subsidiary canals, night storage dams</li> <li>o Pumping plant and in-field canal for flood irrigation systems.</li> </ul> </li> <li>• Mechanization of field operations</li> <li>• Buildings and other storage facilities (depots)</li> <li>• Cotton ginned at already established but underutilized COTTCO ginneries at Triangle, Chiredzi and Chisumbanje</li> </ul>
<b>Project location:</b>	Lower west bank of Sabi opposite ARDA Chisumbanje Estate, in Chiredzi District of Masvingo Province
<b>Lead Agency/ Project Promoter:</b>	Agricultural and Rural Development Authority (ARDA)
<b>Contact:</b>	<p>Agricultural and Rural Development Authority</p> <p>Name:</p> <p>Name:</p>
<b>Actions Required/ Implementation Arrangements/ Contract Type:</b>	Loan financing
<b>Investment Required:</b>	USD 250 million

# Agriculture and Food Processing Sector: Agriculture

**Sub-sector:** Agriculture and Agro-processing



<b>Project Title:</b>	<b>40,000Ha Sugar Cane Project</b>
<b>Project Description:</b>	<p><b>Project activities include:</b></p> <p><b>Land development</b></p> <ul style="list-style-type: none"> <li>• Develop 20,000 Ha under management of ARDA</li> <li>• 20,000 under out-grower scheme management</li> </ul> <p><b>Irrigation Development</b></p> <ul style="list-style-type: none"> <li>• Construction of Kondo Dam and night storage dams</li> <li>• Pumping units and in-field canal systems for gravitational flood irrigation system</li> </ul> <p><b>Seed Propagation and establishment of new plantations:</b></p> <ul style="list-style-type: none"> <li>• Sourcing of 1,000 ha seed material from local and regional markets and established over 6 months</li> <li>• Transplanting after month 9 at a rate of 300 ha per month for next 10 years</li> </ul> <p><b>Mechanization of 50% field operations:</b></p> <ul style="list-style-type: none"> <li>• Mechanized planting</li> <li>• Mechanized harvesting</li> </ul> <p><b>Establish Plant Sugar-Ethanol Plant:</b></p> <ul style="list-style-type: none"> <li>• Develop a flexi-technology for varying proportions of sugar and ethanol production</li> </ul> <p><b>Electricity generation:</b></p> <ul style="list-style-type: none"> <li>• Establish a thermal power plant using sugarcane by-product to heat water, turn turbines and generate electricity</li> </ul>
<b>Project location:</b>	Middle Sabi West Bank in Chipinge District, Manicaland Province
<b>Lead Agency/ Project Promoter:</b>	Agricultural and Rural Development Authority (ARDA)
<b>Contact:</b>	Agricultural and Rural Development Authority Name:
<b>Actions Required/ Implementation Arrangements/ Contract Type:</b>	Loan financing/ Build-Own-Transfer (BOT)
<b>Investment Required</b>	USD 350 million

# Agriculture and Food Processing Sector: Agriculture

**Sub-sector:** Agriculture and Agro-processing



Project Title:	Agro-Processing and Value Addition
Project Description:	<p>Establishment of local agro-processing facilities:</p> <ul style="list-style-type: none"> <li>• Tomato paste production plants</li> <li>• Juice-making plants, drying and tea processing plants</li> <li>• Livestock products processing plant and meat deboning plants</li> <li>• Skin hides processing and value addition</li> <li>• Frozen potato chipping plant</li> <li>• Tobacco cigarette manufacture</li> <li>• Ginning and textile manufacturing</li> <li>• Seed oil production</li> <li>• Animal feed production</li> </ul>
Project location:	Nationwide
Lead Agency/ Project Promoter:	Ministry of Lands, Agriculture, Water, Fisheries, Climate and Rural Resettlement (MLAWCRR)
Contact:	Ministry of Lands, Agriculture, Water, Climate and Rural Resettlement Name
Actions Required/ Implementation Arrangements/ Contract Type:	<ul style="list-style-type: none"> <li>• Joint Venture</li> <li>• Public Private Partnership (PPP)</li> <li>• Private Loans</li> </ul>

# Agriculture and Food Processing Sector: Agriculture

## Sub-sector: Agriculture and Agro-processing



Project Title:	Sugarcane Estate
Project Description:	To establish a 40,000ha sugar cane estate to produce sugar, ethanol and electricity.
Project location:	Chipinge, Manicaland, Zimbabwe
Lead Agency/ Project Promoter:	ARDA
Actions Required/ Implementation	<ul style="list-style-type: none"> <li>• Full feasibility studies and partners</li> </ul>
Arrangements/ Contract Type:	<ul style="list-style-type: none"> <li>• Joint-Venture or Loan</li> </ul>
Project Cost	<ul style="list-style-type: none"> <li>• USD613, 785,000.00</li> </ul>
Finance Required	<ul style="list-style-type: none"> <li>• USD350 million</li> </ul>
Project Status	<ul style="list-style-type: none"> <li>• Preliminary feasibility study done</li> </ul>

Project Title:	Cotton Estate
Project Description:	To establish a 37,000ha cotton estate.
Project location:	Chiredzi, Masvingo, Zimbabwe
Lead Agency/ Project Promoter:	ARDA
Actions Required/ Implementation	<ul style="list-style-type: none"> <li>• Full feasibility studies and technical partner</li> </ul>
Arrangements/ Contract Type:	<ul style="list-style-type: none"> <li>• Joint-Venture or Loan</li> </ul>
Project Cost	<ul style="list-style-type: none"> <li>• USD250</li> </ul>
Finance Required	<ul style="list-style-type: none"> <li>• USD250 million</li> </ul>
Project Status	<ul style="list-style-type: none"> <li>• Preliminary feasibility study done</li> </ul>

# Agriculture and Food Processing

## Sector: Agriculture

**Sub-sector:** Agriculture and Agro-processing

Project Title:	Agro-processing plant
Project Description:	To establish cassava plantations and starch processing plant
Project location:	Harare, Zimbabwe
Lead Agency/ Project Promoter:	Purity Trading Co P/L (SeasonFresh)
Actions Required/ Implementation	<ul style="list-style-type: none"> <li>• Full feasibility study and partners</li> </ul>
Arrangements/ Contract Type:	<ul style="list-style-type: none"> <li>• Joint-Venture or Loan</li> </ul>
Project Cost	<ul style="list-style-type: none"> <li>• USD2 million</li> </ul>
Project Status	<ul style="list-style-type: none"> <li>• Preliminary feasibility study done</li> </ul>





**ZIDA**

ZIMBABWE  
INVESTMENT &  
DEVELOPMENT  
AGENCY

Unearthing **Potential!**

# Water

---



# Agriculture and Food Processing Sector: Water



Project Title:	Eastbourne Dam
Project Description:	<p>The project entails the construction of a conventional zoned earth fill embankment with a downstream rock fill toe across the Nyambwa River near Mutare. The project purpose is to supply water to the city of Mutare and its environs.</p> <p>Technical Details:</p> <ul style="list-style-type: none"> <li>• Maximum dam height: 36.5m</li> <li>• Maximum water depth: 31m</li> <li>• Live Storage: 18.26x106m3</li> <li>• 10%Yield: 15x106m3/ann</li> </ul>
Project location:	Mutare, Manicaland
Lead Agency/ Project Promoter:	Zimbabwe National Water Authority (ZINWA)
Actions Required/ Implementation Arrangements/ Contract Type:	Public Private Partnership (PPP)
Investment Required	USD 39 million

# Agriculture and Food Processing Sector: Water



<b>Project Title:</b>	<b>Tuli-Manyange Dam</b>
<b>Project Description:</b>	<p>The project purpose is to supply water to Gwanda Communal Area villagers and small-scale farmers near the dam.</p> <p>Technical Details:</p> <ul style="list-style-type: none"> <li>• Full Supply Capacity: 33 x 106 m<sup>3</sup></li> <li>• 10% Yield: 22 x 106 m<sup>3</sup></li> <li>• Crest Length: 380m</li> <li>• Length of spillway: 180m</li> </ul>
<b>Project location:</b>	Gwanda and Gwaranyemba Communal Lands in Matabeleland South Province
<b>Lead Agency/ Project Promoter:</b>	Zimbabwe National Water Authority (ZINWA)
<b>Actions Required/ Implementation Arrangements/ Contract Type:</b>	Public Private Partnership (PPP)
<b>Investment Required</b>	USD 38 million



# Agriculture and Food Processing Sector: Water



<b>Project Title:</b>	<b>Dande Dam and Tunnel</b>
<b>Project Description:</b>	<p>The project purpose is irrigation development for ARDA and communal areas in the Dande Valley.</p> <p>The project entails the construction of a zoned earth fill dam on the Dande River and a 7.3km tunnel. The dam is 300m long with a crest width of 8m and of maximum height of 45m. There will be two saddle dams on the right bank of the main dam wall. The outlet works comprise an intake structure, a 1.5m diameter full pressure concrete conduit, a gate and control valve house and 1.5m wide free flow 'D' tunnel.</p> <p>Technical Details:</p> <ul style="list-style-type: none"> <li>• Full supply: <math>160 \times 10^6 \text{ m}^3</math></li> <li>• 10% yield : <math>59.3 \times 10^6 \text{ m}^3</math></li> <li>• Crest length: 300m</li> <li>• Length of spillway: 200m</li> <li>• Length of tunnel: 7.3km</li> <li>• Diameter of tunnel: 1.7m</li> </ul>
<b>Project location:</b>	Gwanda and Gwaranyemba Communal Lands in Matabeleland South Province.
<b>Lead Agency/ Project Promoter:</b>	Zimbabwe National Water Authority (ZINWA)
<b>Actions Required/ Implementation Arrangements/ Contract Type:</b>	Public Private Partnership (PPP)
<b>Investment Required</b>	USD 83 million

# Agriculture and Food Processing Sector: Water



<b>Project Title:</b>	<b>Chivhu Dam</b>
<b>Project Description:</b>	<p>The project entails the construction of water supply station and zoned earth fill dam on Sebakwe River, about 7km south-east of Chivhu Town in Chikomba District, Mashonal- and East Province.</p> <p>The project purpose is to supply water to Chivhu Town and irrigation to the surrounding farms.</p>
<b>Project location:</b>	Chivhu, Mashonaland East Province
<b>Lead Agency/ Project Promoter:</b>	Zimbabwe National Water Authority (ZINWA)
<b>Actions Required/ Implementation Arrangements/ Contract Type:</b>	Public Private Partnership (PPP)
<b>Investment Required</b>	USD 33 million

<b>Project Title:</b>	<b>Shavi Dam</b>
<b>Project Description:</b>	<p>The project entails the construction of a zoned earth-fill dam across the Shave River in Runde Communal Land. The site is 20km from Zvishavane Town along the Shurugwi–Zvishavane Road. Loan to be repaid through sale of irrigation water using the currently approved raw water blend price.</p> <p>The project purpose is to irrigate 824ha of land in Mabwematema Irrigation Scheme of Midlands Province established in 1968.</p>
<b>Project location:</b>	Runde Communal Land, Midlands Province
<b>Lead Agency/ Project Promoter:</b>	Zimbabwe National Water Authority (ZINWA)
<b>Actions Required/ Implementation Arrangements/ Contract Type:</b>	<ul style="list-style-type: none"> <li>• Public Private Partnership (PPP)</li> <li>• Loan Financing</li> </ul>
<b>Investment Required</b>	USD 9 million

# Agriculture and Food Processing Sector: Water



<b>Project Title:</b>	<b>Bindura Dam</b>
<b>Project Description:</b>	<p>The project entails the construction of a zoned earth-fill dam on the Mazowe River in the Bindura District of Mashonaland Central Province.</p> <p><b>Technical Details:</b></p> <ul style="list-style-type: none"> <li>• Full supply capacity: <math>100 \times 10^6 \text{ m}^3</math></li> <li>• 10% yield: <math>50 \times 10^6 \text{ m}^3</math></li> <li>• Crest length: 1,248.0m</li> <li>• Embankment volume: 2,282,300 <math>\text{m}^3</math></li> <li>• Number of saddledams: 3</li> <li>• Length of spillway: 150m</li> </ul> <p>The project purpose is to supply water to Bindura Town, Trojan Nickel Mine, Freda Rebecca Mine, surrounding small mines, and commercial and small-scale farmers near Bindura.</p>
<b>Project location:</b>	Bindura, Mashonaland Central
<b>Lead Agency/ Project Promoter:</b>	Zimbabwe National Water Authority (ZINWA)
<b>Actions Required/ Implementation Arrangements/ Contract Type:</b>	Public Private Partnership (PPP)
<b>Investment Required:</b>	USD 84 million

# Agriculture and Food Processing Sector: Water



Project Title:	Mirror Dam Project
Project Description:	<p>The project entails the construction of a Mirror Dam that consists of a conventional zoned earth-fill embankment with a downstream rock fill toe across the Buzi River in Chipinge District of Manicaland Province.</p> <p>Technical Details:</p> <ul style="list-style-type: none"> <li>• Full supply capacity: 22.87 x 106m<sup>3</sup></li> <li>• 10% yield : 14 x 106m<sup>3</sup></li> <li>• Spillway capacity: 1,031 m<sup>3</sup>/s</li> <li>• Maximum dam height: 36.5m</li> <li>• Maximum water depth: 31m</li> </ul> <p>The project purpose is to supply water and irrigation for the City of Chipinge, farmers, institutions and communities in the Chipinge area.</p>
Project location:	Chipinge, Manicaland
Lead Agency/ Project Promoter:	Zimbabwe National Water Authority (ZINWA)
Actions Required/ Implementation Arrangements/ Contract Type:	Public Private Partnership (PPP)
Estimated Cost of the Project:	USD 43 million

# Agriculture and Food Processing Sector: Water



<b>Project Title:</b>	<b>Nyatana Dam/Power Generation project</b>
<b>Project Description:</b>	The project entails the construction of a zoned earth-fill dam across the Mazowe River in Mudzi District of Mashonaland East Province. Project beneficiaries are the communities and farmers in Mudzi and Mutoko Districts
<b>Project location:</b>	Mudzi District, Mashonaland East
<b>Lead Agency/ Project Promoter:</b>	Zimbabwe National Water Authority (ZINWA)
<b>Actions Required/ Implementation Arrangements/ Contract Type:</b>	Public Private Partnership (PPP)
<b>Remarks:</b>	The loan to be repaid through the sale of irrigation water using the currently approved raw water blend price.

<b>Project Title:</b>	<b>Lubongo Dam</b>
<b>Project Description:</b>	The project entails the construction of a conventional zoned earth-fill structure with initial estimated embankment volume of 1,383 million cubic meters.
<b>The project purpose is to supply water to Gweru and Shurugwi Towns.</b>	Mudzi District, Mashonaland East
<b>Project location:</b>	Midlands
<b>Lead Agency/ Project Promoter:</b>	Zimbabwe National Water Authority (ZINWA)
<b>Actions Required/ Implementation Arrangements/ Contract Type:</b>	Public Private Partnership (PPP)
<b>Estimated Cost of the Project:</b>	USD 125 million

# Agriculture and Food Processing Sector: Water



<b>Project Title:</b>	<b>Kudu Dam Project</b>
<b>Project Description:</b>	<p>The project entails the construction of a zoned earth-fill embankment with a central impervious core across the Munyati River, and a saddle dam of similar cross section. There proved to be large quantities of core material and scarcity of fill material. The impervious core will have slopes of 1:1 rather than the conventional 1:0.5. The main dam core will be 6m wide at its crest.</p> <p>Technical Details:</p> <ul style="list-style-type: none"> <li>• Full supply level: 947.00m</li> <li>• High flood level: 953.12m</li> <li>• Maximum dam height: 72.70m</li> <li>• Total storage: 1551.4 x 106m<sup>3</sup></li> <li>• Dead storage: 60.0 x 106m<sup>3</sup></li> <li>• 10% yield: 380x106 m<sup>3</sup>/annum</li> <li>• Crest width: 8m</li> <li>• Crest length: 860m</li> </ul> <p>The project purpose is to supply water and irrigation for farmers in the Sanyati, Copper Queen, Chenjerai and Lower Gokwe Communal Areas</p>
<b>Project location:</b>	Sanyati, Midlands
<b>Lead Agency/ Project Promoter:</b>	Zimbabwe National Water Authority (ZINWA)
<b>Actions Required/ Implementation Arrangements/ Contract Type:</b>	Public Private Partnership (PPP)
<b>Estimated Cost of the Project:</b>	USD 228 million

# Agriculture and Food Processing Sector: Water

<b>Project Title:</b>	<b>Aberfoyle Dam Project</b>
<b>Project Description:</b>	<p>The project entails the construction of a 40m high earth dam across the Runde River (UTM grid ref. is RJ015212 on Map No. 1929D2).</p> <p>The total earthworks volume is estimated at 900,000m<sup>3</sup>. The project also includes putting in place 30,000m<sup>3</sup> of concrete, while the water storage capacity will be 25m<sup>3</sup>.</p>
<b>Project location:</b>	Midlands (UTM grid ref. is RJ015212 on Map No. 1929D2)
<b>Lead Agency/ Project Promoter:</b>	Zimbabwe National Water Authority (ZINWA)
<b>Actions Required/ Implementation Arrangements/ Contract Type:</b>	Public Private Partnership (PPP)
<b>Estimated Cost of the Project:</b>	USD 70 million

# Agriculture and Food Processing Sector: Water



<b>Project Title:</b>	<b>Gwayi-Umguza Dam</b>
<b>Project Description:</b>	<p>The project entails the construction of a conventional zoned earth-fill embankment with a central impervious core just below the confluence of the Gwayi and Umguzarivers. The embankment is 4.58km long (excluding the spillway) and generally straight with curves near the river bed to allow for good alignment with the concrete arch spillway. Because of the excessive length of embankment and the dry weather conditions in the region, it would be impractical to grass the downstream slopes. The alternative of using cement stabilisation for slope protection was considered and found to be more expensive than rip-rap.</p> <p><b>Technical Details:</b></p> <ul style="list-style-type: none"> <li>• Full supply level: 1028.00m</li> <li>• Full supply capacity: 195 x 106m<sup>3</sup></li> <li>• Storage ratio: 1.48 (M.A.R)</li> <li>• High flood level: 1033.76m</li> <li>• Live capacity : 184.66 x 106m<sup>3</sup></li> <li>• Dead storage: 1.8 x 106m<sup>3</sup></li> <li>• 4% yield: 17.7 x 106m<sup>3</sup>/annum</li> <li>• 10% yield: 27.30 x 106 m<sup>3</sup>/ann</li> <li>• Surface area at F.S.L 3264 ha</li> <li>• Ogecrestspillwaylength: 200m</li> </ul> <p>The project purpose is to supply water and irrigation to the City of Bulawayo, Tsholotsho Growth Point and rural communities near the dam.</p>
<b>Project location:</b>	Tsholotsho/Umguza, Matabeleland North
<b>Lead Agency/ Project Promoter:</b>	Zimbabwe National Water Authority (ZINWA)
<b>Actions Required/ Implementation Arrangements/ Contract Type:</b>	Public Private Partnership (PPP)
<b>Estimated Cost of the Project:</b>	USD 160 million



# Agriculture and Food Processing Sector: Water



Project Title:	Muda Dam
Project Description:	<p>The project entails the construction of a 2.1km long earth-fill dam about 500m downstream of the Muda confluence with the Mupfure River.</p> <p>Technical Details:</p> <ul style="list-style-type: none"> <li>• Full supply capacity: 98,000ML</li> <li>• 10% yield : 31,600ML</li> <li>• Maximum dam height: 31.50m</li> <li>• Crest length: 2,115m</li> <li>• Total volume of materials: 1.684X106m<sup>3</sup></li> </ul> <p>The project purpose is to supply water and irrigation to Chegutu town, Mubayira Growth Point and commercial farming areas around Beatrice.</p>
Project location:	Tsholotsho/Unguza, Matabelerland North
Lead Agency/ Project Promoter:	Zimbabwe National Water Authority (ZINWA)
Actions Required/ Implementation Arrangements/ Contract Type:	Public Private Partnership (PPP)
Estimated Cost of the Project:	USD 60 million

# Agriculture and Food Processing Sector: Water



<b>Project Title:</b>	<b>Nyatsime Dam</b>
<b>Project Description:</b>	<p>The project entails the construction of a 3.91km long earth dam across the Nyatsime River, a tributary of the Manyame River.</p> <p><b>Technical Details:</b></p> <ul style="list-style-type: none"> <li>• Full supply capacity: 75.316x106m<sup>3</sup></li> <li>• 4% yield: 22.383x106m<sup>3</sup></li> <li>• Maximum dam height : 22.84m</li> <li>• Crest length: 3.91km</li> <li>• Volume of materials: 1,694,460m<sup>3</sup></li> </ul> <p>The project purpose is to supply water to Harare and Chitungwiza cities.</p>
<b>Project location:</b>	Seke, Mashonaland East
<b>Lead Agency/ Project Promoter:</b>	Zimbabwe National Water Authority (ZINWA)
<b>Estimated Cost of the Project:</b>	USD 60 million

# Agriculture and Food Processing Sector: Water



<b>Project Title:</b>	<b>Ruya Dam</b>
<b>Project Description:</b>	<p>The project entails the construction of a conventional zoned earth fill dam with a downstream rock fill toe on Ruya river in Mount Darwin District, Mashonaland Central Province.</p> <p><b>Technical Details:</b></p> <ul style="list-style-type: none"> <li>• Full supply capacity: 273 x 106m<sup>3</sup></li> <li>• 10% yield: 136.5 x 106m<sup>3</sup></li> <li>• Maximum dam height: 48.3m</li> <li>• Crest length: 1,250.0m</li> <li>• Volume of material: 5,850,000.0m<sup>3</sup></li> </ul> <p>The project purpose is supply water to irrigate 10,000ha in the Chesa small-scale farming area and Kandeya Communal lands of Mount Darwin. Crops that thrive in this area are cotton, sugar cane, citrus, wheat, potatoes, maize, sugar beans and tomatoes.</p>
<b>Project location:</b>	Mount Darwin, Mashonaland Central
<b>Lead Agency/ Project Promoter:</b>	Zimbabwe National Water Authority (ZINWA)
<b>Actions Required/ Implementation Arrangements/ Contract Type:</b>	Public Private Partnership (PPP)
<b>Estimated Cost of the Project:</b>	USD 160 million

# Agriculture and Food Processing Sector: Water



<b>Project Title:</b>	<b>Glassblock Dam</b>
<b>Project Description:</b>	<p>The project comprises a conventional zoned earth-fill embankment with downstream rock fill toe across Mzingwane River.</p> <p><b>Technical Details:</b></p> <ul style="list-style-type: none"> <li>• Total capacity: 126.0x106m<sup>3</sup></li> <li>• Live capacity: 124.3x106m<sup>3</sup></li> <li>• 4% yield: 24.5x106m<sup>3</sup></li> <li>• Water depth: 34.4m</li> <li>• Surface area at F.S.L.: 1100ha</li> <li>• Embankment volume: 1.4x106m<sup>3</sup></li> <li>• Spillway: 5,770m<sup>3</sup>/sec</li> </ul> <p>The project purpose is to supply water to Bulawayo City.</p>
<b>Project location:</b>	Mzingwane, Matabeleland South
<b>Lead Agency/ Project Promoter:</b>	Zimbabwe National Water Authority (ZINWA)
<b>Actions Required/ Implementation Arrangements/ Contract Type:</b>	Public Private Partnership (PPP)
<b>Estimated Cost of the Project:</b>	USD 88 million

# Agriculture and Food Processing Sector: Water



<b>Project Title:</b>	<b>Silverstroom Dam</b>
<b>Project Description:</b>	<p>The project entails the construction of Silverstroom Dam, which comprises a concrete arch dam with a storage capacity of 140 000 x 106m<sup>3</sup>. The dam is located on the Musengezi River, Centenary District, and Mashonaland Central.</p> <p><b>Technical Details:</b></p> <ul style="list-style-type: none"> <li>• Full supply capacity: 273 x 106m</li> <li>• 10% yield: 136.5 x 106m</li> <li>• Maximum dam height: 48.3m</li> <li>• Crest length: 1,250.0m</li> <li>• Volume of material: 5,850,000.0m<sup>3</sup></li> </ul> <p>The project purpose is to supply water and irrigation of 2,000ha in Centenary Growth Point, ARDA Muzarabani and surrounding farming areas.</p>
<b>Project location:</b>	Centenary District, Mashonaland Central
<b>Lead Agency/ Project Promoter:</b>	Zimbabwe National Water Authority (ZINWA)
<b>Actions Required/ Implementation Arrangements/ Contract Type:</b>	Public Private Partnership (PPP)
<b>Estimated Cost of the Project:</b>	USD 148 million

# Agriculture and Food Processing Sector: Water



<b>Project Title:</b>	<b>Mkwasine Dam</b>
<b>Project Description:</b>	The project entails the construction of a dam with a capacity of 105 million cubic metres, development of an irrigation scheme and construction of a mini-hydro power generation plant.
<b>Project location:</b>	Masvingo Province
<b>Lead Agency/ Project Promoter:</b>	Zimbabwe National Water Authority (ZINWA)
<b>Actions Required/ Implementation Arrangements/ Contract Type:</b>	<ul style="list-style-type: none"> <li>• Public Private Partnership (PPP)</li> <li>• Concessional Loan</li> <li>• EPC Contract</li> </ul>
<b>Estimated Cost of the Project:</b>	USD 70.75 million

<b>Project Title:</b>	<b>Runde- Tende Dam</b>
<b>Project Description:</b>	<p>The project entails the construction of a rock fill dam on the Runde River in the Masvingo Province under Runde Catchment. Its UTM grid ref. is TM577964 on Map No. 1929D2.</p> <p>The dam is about 90m high. It will have a total volume of rock fill of about 2,000,000m<sup>3</sup> and a central core volume of about 520,000m<sup>3</sup>. The water storage capacity will be about 1 billion m<sup>3</sup>.</p> <p>The project purpose is to supply water for irrigation for Masvingo farming community.</p>
<b>Project location:</b>	Masvingo Province (Its UTM grid ref. is TM577964 on Map No. 1929D2)
<b>Lead Agency/ Project Promoter:</b>	Zimbabwe National Water Authority (ZINWA)
<b>Actions Required/ Implementation Arrangements/ Contract Type:</b>	Public Private Partnership (PPP)
<b>Estimated Cost of the Project:</b>	USD 200 million

# Agriculture and Food Processing Sector: Water



<b>Project Title:</b>	<b>Mirror Dam Project</b>
<b>Project Description:</b>	Dam construction for both agriculture and commercial industrial use.
<b>Project location:</b>	Chipinge
<b>Lead Agency/ Project Promoter:</b>	Zimbabwe National Water Authority (ZINWA)
<b>Current Status/ stage of Project:</b>	Implementation stage
<b>Actions Required/ Implementation Arrangements/ Contract Type:</b>	Private Public Partnership (PPP)
<b>Availability of Pre-feasibility Studies, Feasibility studies, and other Studies:</b>	Feasibility study available
<b>Estimated Cost of the Project:</b>	USD 42 million
<b>Investment required</b>	USD 42 million
<b>Project Financial Position:</b>	To be shared with interested investors
<b>Period of Implementation:</b>	36 months

<b>Project Title:</b>	<b>Amapongokwe Dam</b>
<b>Project Description:</b>	The proposed dam is on the Mapongokwe River and the centre line of the wall will be approximately 500m downstream of the Makati and Mapongokwe River confluence. It is shown on a locality sketch drawing 11481 -SK. It can be located at Grid Reference QJ978091, of the 1:50000 map series. The dam has provisions for raising using Radial Gates to increase capacity. The project purpose is to supply water to Gweru City.
<b>Project location:</b>	Gweru, Midlands Province
<b>Lead Agency/ Project Promoter:</b>	Zimbabwe National Water Authority (ZINWA)
<b>Actions Required/ Implementation Arrangements/ Contract Type:</b>	Public Private Partnership (PPP)



**ZIDA**

ZIMBABWE  
INVESTMENT &  
DEVELOPMENT  
AGENCY

Unearthing **Potential!**

# Mining

---





## Mining



No.	Project Title	Project Description	Project		Investment	
			Sector	Location	Amount (USD)	Mode
1	Gold exploration	<ul style="list-style-type: none"> <li>Gold exploration in a reserved area covering 63 000</li> <li>Both green field and brown field exploration zones</li> <li>Current exploration being done through a government entity</li> <li>Historical mining grades averaged 8g/t Au</li> </ul>	Mining	Fort Rixon, Matabeleland North	3,5 Million	Joint venture
2.	Copper Exploration	<ul style="list-style-type: none"> <li>Copper exploration on a reserved area covering 325,000hectares</li> <li>Hosts world class Mhangura mine</li> <li>Reservation also hosts semi-precious stone deposits (beryl, aquamarine) and gold</li> <li>Area under consideration contains high mineralization level</li> </ul>	Mining	Mhangura, Mashonaland West	USD 5 Million	Joint Venture

## Mining



No.	Project Title	Project Description	Project		Investment	
			Sector	Location	Amount (USD)	Mode
3	Diamond exploration	<ul style="list-style-type: none"> <li>Kimberlite diamond exploration</li> <li>Exploration and evaluation of kimberlite diamond deposits</li> </ul>	Mining	Chihota, Mwenezi, Katete, Ngulube	18 million	Debt/Equity
4	Gold processing	<ul style="list-style-type: none"> <li>Gold processing plants</li> <li>Establishment of 24 gold processing plants</li> </ul>	Value addition	All 8 provinces	9,6million	Public Private Partnership (PPP)
5	Gold exploration	<ul style="list-style-type: none"> <li>Gold exploration in a reserved area</li> <li>Area covers 50 000hectares</li> <li>Greenfield exploration and brownfield exploration</li> <li>Historical mining grades averaged 7g/t Au</li> </ul>	Mining	Ngondoma, Midlands Province	4,5 million	Joint Venture
6	Gemology Park	<ul style="list-style-type: none"> <li>Establishment of a one stop diamond processing hub</li> </ul>	Value addition	Mutare	18 million	Debt, equity, and redeemable shares
7	Diamond mining	<ul style="list-style-type: none"> <li>Diamond value chain development through</li> <li>Expansion of existing diamond mining operations</li> <li>Diamond processing, cleaning, sorting, valuation</li> <li>Diamond security and accounting systems</li> </ul>	Mining	Marange, Chimanimani, Beitbridge, Chihota, Mwenezi. Harare	132 million	Debt, equity, and redeemable preference shares



ZIDA

ZIMBABWE  
INVESTMENT &  
DEVELOPMENT  
AGENCY

Unearthing Potential!

# Tourism



## Tourism - (cont'd)

### 2. PROJECTS

No	Project Title and Summary	Project Scope / Description	Contact Person	Project		Investment	
				Sector	Location	Amt \$	Mode
<b>Public Sector</b>							
1	<p><b>Victoria Falls Integrated Resort</b></p> <p>The projects seeks to develop an Integrated Tourism Resort.</p> <p>The project sits on 271 ha and Feasibility studies are underway, with completion earmarked for October 2021.</p>	<p>The project entails the construction of :</p> <ul style="list-style-type: none"> <li>• 5-star hotel</li> <li>• 3-star hotel</li> <li>• 54 Presidential villas</li> <li>• Exhibition Centre</li> <li>• Shopping mall</li> <li>• Office Park</li> <li>• Cultural Centre</li> <li>• Amusement Park</li> <li>• Health spa</li> </ul>	<p><b>Mosi-Oa-Tunya Development Company</b> Seventh Floor John Boyne Building Cnr Innez Terrez/ Speke Ave Tel: +263 2428688 002640 Tel: +263 24 2749421/ +263 24 2770897 Fax: +263 24 2758726/ +263 24 2758728</p>	Tourism	Victoria Falls, Matabeleland North Province, situated on prime land after Masuwe River, east of the town centre.	USD300 million	Public Private Partnerships
2	<p><b>Mtarazi Tourism Resort</b></p> <p>The projects seeks to develop an Integrated Mtarazi Tourism Resort</p> <p>The project sits on 3807 ha and feasibility studies for the project are available.</p>	<p>The project entails the construction of</p> <ul style="list-style-type: none"> <li>• Luxury Hotel</li> <li>• Theme Park</li> <li>• Leisure Centre</li> <li>• Golf Estate</li> <li>• Shopping Mall</li> <li>• Conference Centre</li> <li>• Condors/Time Shares</li> </ul>	<p><b>Mr. L.C. Sibanda</b> 311 Sunninghill Close, Glen Lorne, Harare +263 772 248 327 lysias@anevis.co.zw</p>	Tourism	Eastern Highlands, Manicaland Province in Mtarazi	USD 700 million	Joint venture

## Tourism - (cont'd)

### 2. PROJECTS - (cont'd)

No	Project Title and Summary	Project Scope / Description	Contact Person	Project		Investment	
				Sector	Location	Amt \$	Mode
<b>Public Sector</b>							
3	<p><b>Kariba Municipality -Integrated Resort</b></p> <p>The projects seeks to develop an Integrated Waterfront Resort</p> <p>The project sits on 50 ha</p>	<p>The project entails the construction of</p> <ul style="list-style-type: none"> <li>• Luxury Hotel</li> <li>• golf course</li> <li>• conference centre and</li> <li>• casino</li> </ul>	<p><b>Mr Godfrey Magijani</b> P. O. Box 130 Kariba Tel: +263-061- 2638 Fax: +263-4-758726/28 +263772238590 gtmagijani@gmail.com</p>	Tourism	Mashonaland Province in Kariba Town	USD 450 million	Joint venture
4	<p><b>Kariba Integrated Tourism Resort</b></p> <p>The projects seeks to develop an Integrated Resort in Kariba</p> <p>The project sits on +/- 2370 ha</p>	<p>Construction of the Kariba Integrated Resort whose grand plan includes:</p> <ul style="list-style-type: none"> <li>• 36 Hole Championship Golf Course</li> <li>• Hotels, Convention Centre, Casino</li> <li>• Shopping mall</li> <li>• Integrated commercial district</li> <li>• Luxury condominiums time shares</li> </ul>	<p><b>Mr. F.D Hunzwi</b> +263 774 654 834 dhunzwi@gmail.com</p>	Tourism	Kariba, Mashonaland West	USD 400 million	Joint venture


## Tourism - (cont'd)

### 2. PROJECTS - (cont'd)

No	Project Title and Summary	Project Scope / Description	Contact Person	Project		Investment	
				Sector	Location	Amt \$	Mode
<b>Public Sector</b>							
5	<p><b>City of Mutare -Accommodation and a Gemology Centre</b></p> <p>The projects seeks to develop a Gemology Centre with accommodation facilities</p> <p>The project sits on 74 ha</p>	<p>The project entails the development of:</p> <ul style="list-style-type: none"> <li>• A 5-star hotel</li> <li>• Upmarket Shopping Mall and Food Court</li> <li>• Gemology centre</li> <li>• Upmarket Apartments and Industrial Park</li> <li>• Students Hostels</li> <li>• Helipads</li> </ul>	<p><b>Mr J. Maligwa,</b> Town Clerk City of Mutare, P.O Box 910 Mutare +263 2064412 ext 211, 339, +263 772 963 833 townclerk@mutare. intersol.co.zw pr@ mutarecity.co.zw</p>	Tourism	Manicaland Province in Mutare, 19 km to the South of Mutare Town Centre.	USD175 million	Joint venture
6	<p><b>Zimbabwe Convention Centre and Hotel</b></p> <p>The facility is linked to the Harare Agricultural Show, the biggest agricultural show in Africa and seeks to develop a convention centre and a hotel in Harare</p>	<p>The project entails the development of:</p> <ul style="list-style-type: none"> <li>• State-of-the-art 15,000-seater convention centre</li> <li>• 200 hotel rooms.</li> </ul>	<p>Zimbabwe Agricultural Society <b>Reason Machigere</b> +263 712 321 893 +263 778 249 160 reason@ztazim.co.zw</p>	Tourism	Zimbabwe Agricultural, Harare	USD 150 million	Joint Venture / Build-Own-Transfer (BOT)

## Tourism - (cont'd)

### 2. PROJECTS - (cont'd)



No	Project Title and Summary	Project Scope / Description	Contact Person	Project		Investment	
				Sector	Location	Amt \$	Mode
<b>Public Sector</b>							
7	<p><b>Cleveland Dam Integrated Resort</b></p> <p>The project seeks to develop an Integrated Resort at Cleveland Dam.</p> <p>The project sits on 5 ha and feasibility studies for the project are available</p>	<p>The project entails the development of:</p> <ul style="list-style-type: none"> <li>• 5 Star Hotel (150 rooms)</li> <li>• Conference and Convention Centre</li> <li>• Casino</li> <li>• Camping Site</li> <li>• Boat Cruising</li> </ul>	<p><b>Mr H. Chisango</b> Harare City Council +263 772 545 507 wadzav@gmail.com</p>	Tourism	Cleveland Dam, Harare	USD 100 million	Joint venture
8	<p><b>ZITF Luxury Hotel</b></p> <p>The project seeks to construct a luxury Hotel with ancillary facilities next to Zimbabwe International Trade Fair Exhibition Centre</p> <p>The project sits on 3.08 ha and feasibility studies for the project are available</p>	<p>The project entails the development of:</p> <ul style="list-style-type: none"> <li>• A luxury hotel</li> <li>• Conference Centre</li> <li>• Restaurants</li> <li>• Casinos</li> </ul>	<p><b>Mr C. Dube</b> City of Bulawayo P.O Box 591 Bulawayo Tel: 00263975011 ext. 2162/ +263969701 cdube@citybyo.co.zw tcdept@citybyo.co.zw</p>	Tourism	Bulawayo, bound by the Zimbabwe International Trade Fair Exhibition Centre and the Bulawayo Golf Club	USD 100 million	Joint Venture

## Tourism - (cont'd)


### 2. PROJECTS - (cont'd)

No	Project Title and Summary	Project Scope / Description	Contact Person	Project		Investment	
				Sector	Location	Amt \$	Mode
<b>Public Sector</b>							
9	<p><b>5 Star Luxury Hotel &amp; Conference Centre</b></p> <p>The project seeks to construct a Luxury Hotel with ancillary facilities in Surburbs.</p> <p>The project sits on 1.5 ha</p>	<p>The project entails the development of:</p> <ul style="list-style-type: none"> <li>• A luxury hotel</li> <li>• Conference Centre</li> <li>• Restaurants</li> <li>• casinos</li> </ul>	<p><b>Mr C. Dube</b> City of Bulawayo P.O Box 591 Bulawayo Tel: +263975011 ext. 2162/+263969701 cdube@citybyo.co.zw, tcdept@citybyo.co.zw</p>	Tourism	Bulawayo, situated in the leafy suburb of Suburbs, 5km from the city centre, along the main road to South Africa,	USD 100 million	Joint venture
10	<p><b>Cledza Enterprises - Binga 5 star Luxury hotel and Conference Centre</b></p> <p>The project seeks to develop a Luxury 5-star Hotel and Conference Centre in Binga</p> <p>Feasibility studies not yet done</p>	<p>The aim is to develop a:</p> <ul style="list-style-type: none"> <li>• 5-star hotel</li> <li>• Conference Centre</li> </ul>	<p><b>Mr D. Dziki,</b> Marketing Director 511 Shawdene Close, Uplands, Waterfalls, Harare +263 774 357 960 david.dziki@gmail.com</p>	Tourism	Binga, South - Eastern shore of Lake Kariba.	USD 100 million	TBA



## Tourism - (cont'd)

### 2. PROJECTS - (cont'd)



No	Project Title and Summary	Project Scope / Description	Contact Person	Project		Investment	
				Sector	Location	Amt \$	Mode
<b>Public Sector</b>							
11	<p><b>Exclusive Photographic Camps / Wildlife Documentaries</b></p> <p>The projects seek to develop exclusive photographic camps, Tourist Adventure Activities and Production of wildlife documentaries</p> <p>The projects sits on +10000 ha</p>	<p>Project components are</p> <ol style="list-style-type: none"> <li>1. Development of exclusive photographic camps</li> <li>2. Tourist Adventure Activities</li> <li>3. Production of wildlife documentaries</li> </ol>	<p><b>Mr F. Mangwanya</b>, Zimbabwe Parks and Wildlife Management Authority Corner Borrowdale Road and Sandringham Drive Botanical Gardens Harare P.O. Box CY 140 commercial@zimparcs.org.zw, fszimparcs@karibamun.org.zw</p>	Tourism	Parks and Wildlife Estates	Varies from project to project	Private Public Partnerships (PPP)
12	<p><b>Mupandenyama Shashi Conservate and Investment Trust - Accommodation and Ecological Theme Park</b></p> <p>The project seeks to develop accommodation facilities and ecological theme park in Bindura</p> <p>The projects sits on 203.13 hectares</p>	<p>The project entails the development of:</p> <ul style="list-style-type: none"> <li>• Safari Lodges</li> <li>• Conference rooms</li> <li>• Conservancy/ ecological theme park</li> </ul>	<p><b>Paradzai Mupandenyama</b> 4446 Chiwaridzo II Bindura 077 916 589/ 0771 440 787 mojahs@gmail.com</p>	Tourism	20 km North of Bindura town along the Bindura—Mt Darwin road and 110 kms from Harare	TBA	Joint Venture

## Tourism - (cont'd)


### 2. PROJECTS - (cont'd)



No	Project Title and Summary	Project Scope / Description	Contact Person	Project		Investment	
				Sector	Location	Amt \$	Mode
<b>Public Sector</b>							
13	<p><b>City of Mutare - Luxury Hotel</b></p> <p>The project seeks to develop a luxury hotel and a leisure facilities</p> <p>It sits on 7 ha</p>	<p>The project entails the development of:</p> <ul style="list-style-type: none"> <li>• A luxury hotel</li> <li>• Conference Centre</li> <li>• Cable car</li> <li>• Restaurants</li> </ul>	<p><b>Mr J. Maligwa,</b> Town Clerk City of Mutare, P.O Box 910 Mutare +263 2064412 ext 211, 339 +263 772 963 833 townclerk@mutare. intersol.co.zw pr@mutarecity.co.zw</p>	Tourism	Parks and Wildlife Estates	Varies from project to project	Private Public Partnerships (PPP)
14	<p><b>Heavenly Executive Solutions – Masvingo Tourism Resort</b></p> <p>The project seeks to develop a world class tourism resort/village on the shores of Shagashe River in Masvingo.</p> <p>It sits on 33.4 ha of prime land</p>	<p>The lake shore resort will also include:</p> <ul style="list-style-type: none"> <li>• an amusement park,</li> <li>• 2 3D theatres</li> <li>• a conference centre</li> </ul>	<p><b>Dr. F. Kasese</b> 12 Herbst Road, Rhodene, Masvingo Tel: +263-39-265974 Mobile: +263-712 206 095</p>	Tourism	Shagashe River, Masvingo (on the shores of Lake Mutirikwi)	USD 42 million	TBA

## Tourism - (cont'd)


### 2. PROJECTS - (cont'd)



No	Project Title and Summary	Project Scope / Description	Contact Person	Project		Investment	
				Sector	Location	Amt \$	Mode
<b>Public Sector</b>							
15	<p><b>Kariba Municipality - Holiday homes</b></p> <p>The project seeks to develop luxury holiday homes and lodges on 19 of its commercial stands, with each stand measuring a minimum of an acre, overlooking Lake.</p> <p>The project sits on 20+ ha</p>	<p>The project entails the development of:</p> <ul style="list-style-type: none"> <li>Holiday homes</li> </ul>	<p><b>Mr. R Kamhoti,</b> Town Clerk Municipal Offices, Old Administration Block P. O Box 130, Heights, Kariba mok@karibamun.org.zw kamhotir@gmail.com</p>	Tourism	Kariba on top of Windsor Hill, overlooking the lake, closer to the shoreline and Marineland Harbour	USD 20 Million	Joint Venture
16	<p><b>Masvingo Municipality – Shopping Mall</b></p> <p>The project seeks to construct a shopping Mall in Rhodene/ Clovelly Masvingo</p> <p>The project sits on +/- 10 hectares</p>	<p>A shopping mall to service tourists and the sprawling Rhodene and Clovelly suburbs.</p>	<p><b>Mr A. Gusha,</b> Town Clerk Masvingo Town Council, P. O. Box 17, Masvingo +263 712 207 067 agusha@masvingocity.co.zw fradkase@yahoo.com</p>	Tourism	Masvingo (Rhodene/ Clovelly suburbs)	USD15 million	Joint Venture

## Tourism - (cont'd)

### 2. PROJECTS - (cont'd)



No	Project Title and Summary	Project Scope / Description	Contact Person	Project		Investment	
				Sector	Location	Amt \$	Mode
<b>Public Sector</b>							
17	<p><b>Ihlosi Safaris and Tours - High End Safari Camp/ Lodges</b></p> <p>The project is offering an investment opportunity in 4 photographic sites to develop safari lodges and camps on 25-year concessions offered by Parks and Wildlife Authority and the Forestry Commission.</p> <p>It sits on 480km<sup>2</sup></p>	<p>Development of high-end safari camps/lodges</p> <ul style="list-style-type: none"> <li>Shakwankwi, Hwange: 24-32 guests</li> <li>Sikumi Forest, Hwange: 24 guests</li> <li>Yemambere Island, Kariba: 24 guests</li> <li>Mashuma – Charara Safari Area, Kariba: 24-32 guests</li> </ul>	<p><b>Mr Melusi Mpofu,</b> Partner melusi@ihlosicapital.com/ mailto: fszimparks@karibamun.org.zw</p>	Tourism	Different locations	<p>Shakwankwi, Hwange: USD3,228,000</p> <p>Sikumi Forest, Hwange: USD1,235,000</p> <p>Yemambere Island, Kariba: USD2,953,600</p> <p>Mashuma – Charara Safari Area, Kariba: USD2,653,600</p>	TBA
18	<p><b>Chimanimani Health Spa Resort and Lodges</b></p> <p>The project entails development of a health spa resort around magnificent, natural hot springs with therapeutic hot waters.</p>	<p>The vision is to transform this natural product into:</p> <ul style="list-style-type: none"> <li>A health spa</li> <li>Lodges/chalets</li> <li>Specialty restaurants</li> </ul>	<p><b>Chimanimani Rural District Council</b></p> <p>reason@ztazim.co.zw</p>	Tourism	Chimanimani in Manicaland Province, Nyanyadzi, 151 km due south of the City of Mutare	USD 10 million	Joint Venture


## Tourism - (cont'd)

### 2. PROJECTS - (cont'd)

No	Project Title and Summary	Project Scope / Description	Contact Person	Project		Investment	
				Sector	Location	Amt \$	Mode
<b>Public Sector</b>							
19	<p><b>The Stephen Margolis Resort</b></p> <p>The project seek re-capitalisation to expand its existing operations</p> <p>The project is operational and Feasibility studies are available</p>	Constructing new accommodation to enable the expansion of the existing hospitality business.	<p><b>The Stephen Margolis Resort</b>  <b>Mr S Margolis</b>            +263 24 2774436/8 /            +263 712 602 630            margolis@africaonline.co.zw,            www.stephenmargolisresort.com</p>	Tourism	The Stephen Margolis Resort, Harare	USD 6 million	Joint venture
20	<p><b>Kariba Town Municipality - Accommodation &amp; Ancillary Services</b></p> <p>Kariba Town Municipality is looking to develop a luxury hotel overlooking the late on their 2ha Baobab Extension stand</p> <p>The project sits on 2 ha</p>	<p>The project entails the development of:</p> <ul style="list-style-type: none"> <li>• A luxury hotel</li> <li>• Conference centre</li> <li>• Restaurants</li> <li>• Casinos</li> </ul>	<p><b>Mr. R Kamhoti,</b>            Town Clerk            Municipal Offices,            Old Administration Block            P. O Box 130,            Heights,            Kariba            mok@karibamun.org.zw</p>	Tourism	Kariba's low-density suburb of Baobab Extension and on top of a hill.	USD 5 Million	Joint Venture

## Tourism - (cont'd)


### 2. PROJECTS - (cont'd)



No	Project Title and Summary	Project Scope / Description	Contact Person	Project		Investment	
				Sector	Location	Amt \$	Mode
<b>Public Sector</b>							
21	<p><b>Kariba Municipality - Hotel &amp; Conference Centre</b></p> <p>Kariba Municipality is looking to develop a luxury hotel overlooking the late on their 3.5-hectare Camp Hill stand.</p> <p>The project sits on 2 ha</p>	<p>The project entails the development of:</p> <ul style="list-style-type: none"> <li>• A luxury hotel</li> <li>• Conference Centre</li> <li>• Restaurants</li> <li>• Casinos</li> </ul>	<p><b>Mr. R Kamhota,</b> Town Clerk Municipal Offices, Old Administration Block P. O Box 130, Heights, Kariba mok@karibamun.org.zw</p>	Tourism	Kariba's low-density suburb of Camp Hill and on top of a hill.	USD 5 Million	Joint venture
22	<p><b>Binga Hot Springs Resort</b></p> <p>Binga Rural District Council seeks to develop a Hot springs Resort in Binga</p> <p>Feasibility studies have not yet been done</p>	<p>The project entails the development of:</p> <ul style="list-style-type: none"> <li>• Hot springs resort with luxury lodges,</li> <li>• Conference facilities</li> <li>• Health facilities</li> </ul>	<p><b>Binga Rural District Council</b> +263 015 326/ +263 015 267/ +263 015 407/ +263 015 665/ +263 015 308-9/ +263772933081 bingardc@gmail.com</p>	Tourism	Binga, Matabeleland North Province	USD 4 million	Joint Venture

## Tourism - (cont'd)

### 2. PROJECTS - (cont'd)



No	Project Title and Summary	Project Scope / Description	Contact Person	Project		Investment	
				Sector	Location	Amt \$	Mode
<b>Public Sector</b>							
23	<p><b>Victoria Falls Total Events - a multipurpose modern cultural village</b></p> <p>The project seeks to construct a multipurpose modern cultural village in Victoria Falls town.</p> <p>The project is still at design stage but Feasibility studies available</p>	The project entails the development of a multipurpose modern cultural village.	<p><b>Victoria Falls Total Events</b> <b>Mr F Chakawa</b> +263 785511112 / +263 771142964 victoriafallstotalevents@gmail.com / 48288225@mylife.unisa.ac.za</p>	Tourism	Victoria Falls	USD 4 million	Joint venture
24	<p><b>Dzimbanhete Arts and Culture Centre</b></p> <p>The projects seeks to develop a thematic park in the form of a one-stop African village.</p> <p>The project sits on 17 ha and feasibility studies for the project are available</p>	The project entails the development of a cultural village characterised by 54 villages, laid out on a 12-hectare piece of land in a natural set up, with each village, with an average of 2/3 structures on a 2000 sqm area with unique architectural style and material culture.	<p><b>Chikonzero Chazunguza, Laura Ganda</b> 1088 Marley Drive, Kambanji, Harare, Zimbabwe +263 783 499 954 +263 784 455 056 chazunguza@gmail.com lauraganda@gmail.com</p>	Tourism	Plot 1, Stonehurst Farm, Nharira Hills, Harare	USD 2.2 million	Joint Venture Lease Build Operate Transfer (BOT)

## Tourism - (cont'd)

### 2. PROJECTS - (cont'd)

No	Project Title and Summary	Project Scope / Description	Contact Person	Project		Investment	
				Sector	Location	Amt \$	Mode
<b>Public Sector</b>							
25	<p><b>Hwange Upmarket Safari Resort</b></p> <p>The project seeks for investment to build a high-end photographic camp on its land situated in Hwange National Park as well as commencing game ranging on its 4 000-hectare land in Matetsi.</p> <p>The project sits on 1000 ha</p>	<p>The project entails the construction of:</p> <ul style="list-style-type: none"> <li>• Construction of Luxury Safari Camp and a camping site</li> <li>• Building of breeding pens</li> <li>• Drilling and equipping of boreholes</li> <li>• Acquisition of transfer vehicles</li> <li>• Construction of an off-grid power supply</li> </ul>	<p><b>Mr R Magumula</b> 2 Hibiscus close Baobab Hill, Hwange +263772667169 +263737329209 renmagg@gmail.com theelephantsoundssafaris@gmail.com</p>	Tourism	Hwange National Parks, Dete, Mat North	USD 2 million	BOT
26	<p><b>Mhofu Safari Camp</b></p> <p>The project seeks Re-capitalization of company operations</p> <p>The project sits on 2200 ha and feasibility studies for the project are available</p>	<p>The project entails construction of:</p> <ul style="list-style-type: none"> <li>• 10 lodges</li> <li>• A water hole</li> <li>• A reception area</li> <li>• game viewing platform</li> </ul>	<p><b>Mr. C. Dembetembe,</b> Director No 40 Hopton Road, Southwold Bulawayo +263 29 474235, +263 772384251 cgdembaz@gmail.com</p>	Tourism	Fuller Forest, Victoria Falls, 10 km from Victoria Falls International Airport	USD 1 million	Joint Venture





**ZIDA**

ZIMBABWE  
INVESTMENT &  
DEVELOPMENT  
AGENCY

Unearthing Potential!

# Information Communication & Technology

---



# Information Communication & Technology

No.	Project Title	Project Description	Project		Investment	
			Sector	Location	Amount (USD)	Mode
1	Construction of 856 New 3G/4G sites	To provide improved data services for e-learning and SMART Agriculture use cases in rural communities; of these 375 are Co-located NB-IOT/4G Sites to provide access, capacity, throughputs and latency to support the following services: - IOT for SMART Cities, IPTV/VOD, M2M	ICT	Countrywide	86 million	Debt/Equity
2	Build a Telco Cloud	To modernize the network and support the following summed up use cases <ul style="list-style-type: none"> <li>• Mobile (MPC/EPC/5G)</li> <li>• Networking (L2-L7)</li> <li>• Security</li> <li>• Voice</li> <li>• CDN/ Caching</li> <li>• Access</li> <li>• Video Content Management</li> </ul>	ICT	Countrywide	13 million USD	Joint Venture
3	Build the following VAS Platforms in the Virtual Environment	<ul style="list-style-type: none"> <li>• Modernise the Mobile Financial Service platform</li> <li>• Bulk SMS Project + LBS Dynamic Tariffing System Project</li> <li>• Campaign Management System Project</li> <li>• Service Delivery Platform (SDP) Project</li> <li>• Diameter Routing Agent Platform (DRA) Project</li> <li>• Data Analytics and Reporting Platform (PRS) Project</li> <li>• Project Converged Billing Platform Project</li> <li>• Contact Center Project Data Center &amp; Core IP Expansion Project</li> </ul>	ICT	Countrywide	20 million USD	Joint Venture
4	Fibre to The Home (FTTH) for Fixed Broadband Access	FTTH rollout targeting 100,000 homes to be reached by 2023	ICT	Countrywide	50 million USD	Partnership funding (PPP)

# Information Communication & Technology

No.	Project Title	Project Description	Project		Investment	
			Sector	Location	Amount (USD)	Mode
5	Fixed Wireless Access	Deployment of 1 million fixed wireless broadband lines through long term evolution technology (LTE) as well as point to multipoint access radios	ICT	Countrywide	130 million USD	Partnership funding (PPP)
6	Broadband Core Network Expansion	Internet Core Network upgrade including core network, IP/MPLS and access systems such as VSAT and Wi-Fi	ICT	Countrywide	20 million USD	Partnership funding (PPP)+ Debt Funding
7	Deployment of Data Centre Cloud Infrastructure	Expansion of Data Centre facilities (Power, Air cooling, Racks, DC Modules, Cloud Infrastructure, Disaster Recovery) Expansion of co-location rooms throughout the country	ICT	Countrywide	22 million USD	Partnership funding (PPP)
8	Information Systems Upgrade	Upgrade of core information systems (Billing, CRM, BSS, OSS, Workflow)	ICT	Countrywide	34.8 million USD	Debt funding
9	Core Network Systems Upgrade	Upgrade of core network systems to enhance capabilities with the following systems being targeted: <ul style="list-style-type: none"> <li>• Network Operations Centre</li> <li>• Power</li> <li>• Hybrid Solar</li> <li>• Air cooling systems</li> <li>• Network Synchronisation</li> </ul>	ICT	Countrywide	19.8 million USD	Debt funding
10	National ICT Manufacturing Project	Manufacture or assemble of ICT equipment featuring: <ul style="list-style-type: none"> <li>• Computer Desktops &amp; Laptops</li> <li>• Tablets &amp; Smart Phones</li> <li>• Telephone Handsets &amp; PBXs</li> <li>• Smart Meters</li> </ul>	ICT	Countrywide	5.8 million USD	Joint Venture
11	Africom Investment Focus	Focused on investment in service accessibility in the under serviced areas, through telecommunications infrastructure development as well as solar power roll out	ICT	Countrywide	120 million USD	Joint Venture

# Information Communication & Technology

No.	Project Title	Project Description	Project		Investment	
			Sector	Location	Amount (USD)	Mode
12	Digitisation of the post	<p>Post Office Computing Hardware</p> <ul style="list-style-type: none"> <li>• Provision of ICT Hardware to augment existing infrastructure to enable the operationalization of the already acquired front end Postal System.</li> <li>• ICT Hardware – Desktops, Document Printers, Bar Code Scanners, Postal Scales, Receipt Printers, Uninterruptable Power Supply (UPS) and Servers for the Data Center.</li> <li>• Servers and accessories to host the Digital Money Order Financial system (Post Money).</li> <li>• Setting-up of Hot Posts Wi-Fi Connectivity at all Post Offices.</li> <li>• Bureau De Change Software.</li> <li>• Finger Print Scanners for the building and compilation of a National Biometric Database with relevant Biometric Information for the automation of Pension Life Cycle Management System and Proof of life Certification.</li> <li>• Real-time integration of systems and easy access of Pension Funds.</li> <li>• Hand held scanners for delivery of E-Commerce and E- Government Services, including Post4Health items, Acknowledgement of Receipt and Track and Trace.</li> </ul>	ICT	Countrywide	2, 032 million USD	Joint Venture
13	Solar Energy Power	<ul style="list-style-type: none"> <li>• Installation and generation of solar power at Post Offices premises to ensure uninterrupted power supply to all Post Offices and to offload excess power to the National Grid and or nearby Communities.</li> <li>• Seed stock for the Sale of Solar Products and Accessories throughout the Postal Network.</li> </ul>	ICT	Countrywide	1, 46 million USD	Joint Venture

# Information Communication & Technology

No.	Project Title	Project Description	Project		Investment	
			Sector	Location	Amount (USD)	Mode
14	Property Development	<ul style="list-style-type: none"> <li>Change of property use of the existing Postal Buildings and Houses.</li> <li>Property Development by modernization the existing Post Offices into one stop Postal Express Malls incorporating Fuel Stations, Fast Food Outlets, Medical Centres and Convenient Stores.</li> <li>Development of existing Post Office stands into Inland Ports for Bonded Warehousing, Construction of Medical and Shopping Centre Facilities.</li> </ul>	ICT	Countrywide	42 million USD	Joint Venture
15	Passive Infrastructure Deployment	<ul style="list-style-type: none"> <li>Base station towers erection in batches of 100.</li> </ul>	ICT	Countrywide	1, 46 million USD	Joint Venture
16	Green Power for base Stations And Headquarters	<ul style="list-style-type: none"> <li>Provision of solar power for already deployed 800 base stations</li> <li>Solar Plant for New HQ</li> </ul>	ICT	Countrywide	36 million	Vendor Finance
17	NetOne Headquarters Construction	<ul style="list-style-type: none"> <li>Construction of NetOne headquarters in Harare</li> </ul>	ICT	Harare	5million	Mortgage loan
18	Broadband Transmission systems	<ul style="list-style-type: none"> <li>Provision of Mobile broadband systems for high-speed mobile network communications.</li> </ul>	ICT	Countrywide	15 million	Debt Financing
19	National Fibre Backbone	To extend the existing fibre backbone to reach and serve every district in the country approximately 6000km will be covered	ICT	Countrywide	30 million USD	Partnership
20	Construction of shared telecommunications base stations and associated passive infrastructure for the provision of telecommunication services in underserved areas in Zimbabwe	<p>To extend coverage by constructing 350 shared base stations in uncovered rural remote areas. This will include the requisite passive infrastructure.</p> <p>All the three MNOs in the country will ride in this infrastructure.</p>	ICT	Countrywide	250 million	Partnership

# Information Communication & Technology

No.	Project Title	Project Description	Project		Investment	
			Sector	Location	Amount (USD)	Mode
21	Mobile Number Probability	To allow convenience to people to move with their number from one operator to another			1 million USD	
22	Smart City	This project (Smart/Safe City project) integrates information and communication technologies (ICTs), network infrastructure and various physical devices to improve quality of life, efficiency of urban operations and services, and competitiveness.	ICT	Countrywide focusing on Harare city	5 million	Joint Venture
23	Smart Education	Computerisation of all government schools across the country. This will involve the capacitation of schools with computers, networks (WAN, LAN, WIFI), learning & teaching aids such as interactive intelligent tools, printers, and remote learning aids. Target per year is at least 1500 schools	ICT/ Education	Countrywide	75 million	Joint Venture
24	Smart Government	<ul style="list-style-type: none"> <li>This involves automation of all government systems and embedding IOT in the process for improving service delivery and decision making and at the same time increasing productivity across all government arms</li> </ul> <p>It also focuses on the digitization or conversion of information from a physical format e.g., paper based into digital form to enable access to a global audience and eliminate the need to visit the physical location</p>	ICT	Countrywide	200 million	Joint Venture
25	Smart Health (Phase 1)	The Smart Health seeks to provide health-related services and information using modern technologies. This will allow long-distance patient and clinician contact, care, advice, reminders, education, intervention, monitoring remotely	ICT/Health	Countrywide	350 million	Joint Venture

# Information Communication & Technology

No.	Project Title	Project Description	Project		Investment	
			Sector	Location	Amount (USD)	Mode
26	Community Information Centres	<ul style="list-style-type: none"> <li>The project involves establishment ICT enabled Community Information Centres.</li> <li>These centres will be established in all the country's 10 Provinces including districts and village centres.</li> <li>The Centres should serve the community through the provision of Internet, e-Government Services, e-Commerce services, gaming systems, Training facilities, Document processing etc.</li> <li>It's a National ICT strategy of bridging the digital divide within Zimbabwean Society</li> </ul>	ICT	Countrywide	5 million	Joint Venture
27	Smart Agriculture	The project looks at ICT enabling and embedding IOT & Big Data Management in the Agricultural Sector. This will be anchored on the Smart Africa Agri-Tech Blue print and the Smart Zimbabwe 2030 Master Plan	ICT/ Agriculture	Countrywide	100 million	Joint Venture



**ZIDA**

ZIMBABWE  
INVESTMENT &  
DEVELOPMENT  
AGENCY

Unearthing **Potential!**

# Student Accommodation

---





## Student Accommodation

Project Title	Sable Chemicals Fertilizer Plant Upgrade
Company Name	National University of Science and Technology
Company profile	National University of Science and Technology is a state owned university which falls under the Ministry of Higher and Tertiary Education, Innovation, Science and Technology Development. It has an annual enrollment of 8, 587 students which is projected to grow to 24,000 by year 2022. It has a staff establishment of 1,274. The University currently has only 2% of the required student and staff accommodation.
Project Location	Bulawayo, Zimbabwe
Lead Agency/ Project Promoter	Ministry of Higher and Tertiary Education, Innovation, Science and Technology Development
Project Description	Construction of student and staff accommodation
Sector	Education
Action required/ Implementation arrangements / Contract type	Debt, JVs, and PPPs
Availability of pre – feasibility studies, feasibility studies and other studies	
Estimated cost of project \$	US\$67.6 million (Student accommodation-US\$35.3 million & staff accommodation US\$32.3 million)
Investment Required \$	US\$67.6 million



## Student Accommodation

Project Title	Construction of University Student Accommodation
Company Name	University of Zimbabwe
Company profile	University of Zimbabwe is a state owned university which falls under the Ministry of Higher and Tertiary Education, Innovation, Science and Technology Development. It has an annual enrollment of 17,800 students which is projected to grow to 20,000 by year 2022. It has a staff establishment of 3,539. The University currently has only 10% of the required student accommodation.
Project Location	Harare, Zimbabwe
Lead Agency/ Project Promoter	Ministry of Higher and Tertiary Education, Innovation, Science and Technology Development
Project Description	Construction of student accommodation
Sector	Education
Action required/ Implementation arrangements / Contract type	Debt, JVs, and PPPs
Availability of pre – feasibility studies, feasibility studies and other studies	
Estimated cost of project \$	US\$29.5 million
Investment Required \$	US\$29.5 million



## Student Accommodation

Project Title	Construction of University Student and Staff Accommodation
Company Name	Harare Institute of Technology
Company profile	Harare Institute of Technology is a state owned university which falls under the Ministry of Higher and Tertiary Education, Innovation, Science and Technology Development. It has an annual enrollment of 1,811 students which is projected to grow to 5,433 by year 2022. It has a staff establishment of 410. The University currently has only 20% of the required student and staff accommodation.
Project Location	Harare, Zimbabwe
Lead Agency/ Project Promoter	Ministry of Higher and Tertiary Education, Innovation, Science and Technology Development
Project Description	Construction of student and staff accommodation
Sector	Education
Action required/ Implementation arrangements / Contract type	Debt, JVs, and PPPs
Availability of pre – feasibility studies, feasibility studies and other studies	
Estimated cost of project \$	US\$15 million (Student accommodation-US\$12.5 million & staff accommodation US\$2.5 million)
Investment Required \$	US\$15 million



## Student Accommodation



Project Title	Construction of University Student and Staff Accommodation
Company Name	Chinhoyi University of Technology
Company profile	Chinhoyi University of Technology is a state owned university which falls under the Ministry of Higher and Tertiary Education, Innovation, Science and Technology Development. It has an annual enrollment of 7,081 students which is projected to grow to 9,914 by year 2022. It has a staff establishment of 886. The University currently has only 16% of the required student and staff accommodation.
Project Location	Harare, Zimbabwe
Lead Agency/ Project Promoter	Ministry of Higher and Tertiary Education, Innovation, Science and Technology Development
Project Description	Construction of student and staff accommodation
Sector	Education
Action required/ Implementation arrangements / Contract type	Debt, JVs, and PPPs
Availability of pre – feasibility studies, feasibility studies and other studies	
Estimated cost of project \$	US\$26.8 million (Student accommodation-US\$25 million & staff accommodation US\$1.8 million)
Investment Required \$	US\$26.8 million

## Student Accommodation

Project Title	Construction of University Student and Staff Accommodation
Company Name	Bindura University of Science Education
Company profile	Bindura University of Science Education is a state owned university which falls under the Ministry of Higher and Tertiary Education, Innovation, Science and Technology Development. It has an annual enrollment of 5,578 students which is projected to grow to 16,700 by year 2022. It has a staff establishment of 692. The University currently has only 7% of the required student and staff accommodation.
Project Location	Bindura, Zimbabwe
Lead Agency/ Project Promoter	Ministry of Higher and Tertiary Education, Innovation, Science and Technology Development
Project Description	Construction of student accommodation
Sector	Education
Action required/ Implementation arrangements / Contract type	Debt, JVs, and PPPs
Availability of pre – feasibility studies, feasibility studies and other studies	
Estimated cost of project \$	US\$42.5 million
Investment Required \$	US\$42.5 million



## Student Accommodation



Project Title	Construction of University Student and Staff Accommodation
Company Name	Lupane State University
Company profile	Lupane State University is a state owned university which falls under the Ministry of Higher and Tertiary Education, Innovation, Science and Technology Development. It has an annual enrollment of 3,025 students which is projected to grow to 12,025 by year 2022. It has a staff establishment of 307. The University currently has only 11% of the required student and staff accommodation.
Project Location	Lupane, Zimbabwe
Lead Agency/ Project Promoter	Ministry of Higher and Tertiary Education, Innovation, Science and Technology Development
Project Description	Construction of student and staff accommodation
Sector	Education
Action required/ Implementation arrangements / Contract type	Debt, JVs, and PPPs
Availability of pre – feasibility studies, feasibility studies and other studies	
Estimated cost of project \$	US\$24.3 million (Student accommodation-US\$11.8 million & staff accommodation US\$12.5 million)
Investment Required \$	US\$24.3 million

## Student Accommodation

Project Title	Construction of University Student and Staff Accommodation
Company Name	United College of Education
Company profile	United College of Education is a state owned college which falls under the Ministry of Higher and Tertiary Education, Innovation, Science and Technology Development. It has an annual enrollment of 2,566 students which is projected to grow to 4,200 by year 2022. It has a staff establishment of 167. The University currently has only 10% of the required student and staff accommodation.
Project Location	..., Zimbabwe
Lead Agency/ Project Promoter	Ministry of Higher and Tertiary Education, Innovation, Science and Technology Development
Project Description	Construction of student accommodation
Sector	Education
Action required/ Implementation arrangements / Contract type	Debt, JVs, and PPPs
Availability of pre – feasibility studies, feasibility studies and other studies	
Estimated cost of project \$	US\$... million
Investment Required \$	US\$... million



## Student Accommodation



Project Title	Construction of Colleges' Student and Staff Accommodation
Company Name	Belvedere Technical Teachers College
Company profile	Belvedere Technical Teachers College is a state owned college which falls under the Ministry of Higher and Tertiary Education, Innovation, Science and Technology Development. It has an annual enrollment of 2,337 students which is projected to grow to 3,245 by year 2022. It has a staff establishment of 274. The University currently has only 51% of the required student and staff accommodation.
Project Location	Harare, Zimbabwe
Lead Agency/ Project Promoter	Ministry of Higher and Tertiary Education, Innovation, Science and Technology Development
Project Description	Construction of student and staff accommodation
Sector	Education
Action required/ Implementation arrangements / Contract type	Debt, JVs, and PPPs
Availability of pre – feasibility studies, feasibility studies and other studies	
Estimated cost of project \$	US\$0.6 million (Student accommodation-US\$0.3 million & staff accommodation US\$0.3 million)
Investment Required \$	US\$0.6 million



## Student Accommodation

Project Title	Construction of Colleges' Student and Staff Accommodation
Company Name	School of Hospitality and Tourism
Company profile	School of Hospitality and Tourism is a state owned college which falls under the Ministry of Higher and Tertiary Education, Innovation, Science and Technology Development. It has an annual enrollment of 709 students which is projected to grow to 1,500 by year 2022. It has a staff establishment of 73. The University currently has only 27% of the required student and staff accommodation.
Project Location	..., Zimbabwe
Lead Agency/ Project Promoter	Ministry of Higher and Tertiary Education, Innovation, Science and Technology Development
Project Description	Construction of student and staff accommodation
Sector	Education
Current Status / Stage of project	
Action required/ Implementation arrangements / Contract type	Debt, JVs, and PPPs
Availability of pre – feasibility studies, feasibility studies and other studies	
Estimated cost of project \$	US\$6.1 million (Student accommodation-US\$5 million & staff accommodation US\$1.1 million)
Investment Required \$	US\$6.1 million



## Student Accommodation



Project Title	Construction of Colleges' Student and Staff Accommodation
Company Name	Madziwa Teachers College
Company profile	Madziwa Teachers College is a state owned college which falls under the Ministry of Higher and Tertiary Education, Innovation, Science and Technology Development. It has an annual enrollment of 1,785 students which is projected to grow to 2,400 by year 2022. It has a staff establishment of 100. The University currently has only 33% of the required student and staff accommodation.
Project Location	..., Zimbabwe
Lead Agency/ Project Promoter	Ministry of Higher and Tertiary Education, Innovation, Science and Technology Development
Project Description	Construction of student and staff accommodation
Sector	Education
Current Status / Stage of project	
Action required/ Implementation arrangements / Contract type	Debt, JVs, and PPPs
Availability of pre – feasibility studies, feasibility studies and other studies	
Estimated cost of project \$	US\$3.1 million (Student accommodation-US\$1.5 million & staff accommodation US\$1.6 million)
Investment Required \$	US\$3.1 million

## Student Accommodation



Project Title	Construction of Colleges' Student and Staff Accommodation
Company Name	Mkoba Teachers College
Company profile	Mkoba Teachers College is a state owned college which falls under the Ministry of Higher and Tertiary Education, Innovation, Science and Technology Development. It has an annual enrollment of 1,626 students which is projected to grow to 2,282 by year 2022. It has a staff establishment of 140. The University currently has only 19% of the required student and staff accommodation.
Project Location	Gweru, Zimbabwe
Lead Agency/ Project Promoter	Ministry of Higher and Tertiary Education, Innovation, Science and Technology Development
Project Description	Construction of student and staff accommodation
Sector	Education
Current Status / Stage of project	
Action required/ Implementation arrangements / Contract type	Debt, JVs, and PPPs



**ZIDA**

ZIMBABWE  
INVESTMENT &  
DEVELOPMENT  
AGENCY

Unearthing **Potential!**

# Health

---



## Health

No.	Project Title	Project Description	Project		Mode
			Sector	Location	
1	Natpharm	<ul style="list-style-type: none"> <li>• Medical consumables</li> <li>• Equipment</li> <li>• Expertise</li> <li>• Raw materials</li> <li>• External markets</li> </ul>	Health	Harare	Joint Venture
2	Avenues- Quinary level	<ul style="list-style-type: none"> <li>• Level of Care</li> <li>• Complicated procedures</li> <li>• Critical care Expertise</li> <li>• Equipment</li> <li>• Growing Network of Hospital, local, Regional</li> </ul>	Health	Harare	Joint Venture
3	Varichem	<ul style="list-style-type: none"> <li>• General pharma and pharma-related products</li> <li>• Market support</li> <li>• Equipmen</li> <li>• Expertise</li> </ul>	Health	Harare	Joint venture/ Partnership
4	Medicinal Cannabis	<ul style="list-style-type: none"> <li>• Medicinal cannabis cultivation</li> <li>• Processing</li> <li>• Markets/ Market support</li> </ul>	Health	Harare	100% ownership
5	Medicines Control Authority of Zimbabwe (MCAZ)	<ul style="list-style-type: none"> <li>• Analytical Instruments</li> <li>• Technical support</li> </ul>	Health	Harare	Partnership (PPP)

# HOUSING INNOVATION AND MODERNISATION

NAME OF PROJECT	DESCRIPTION/SUMMARY	EXPECTED OUTCOME	PROJECT STATUS	INVESTMENT OPPORTUNITIES	PROJECT LOCATION	PROJECT SPONSOR
Climate Change resilient buildings	Developing cheaper, modern and climate resilient housing and social amenities models	Safe human settlements (which are not prone to climate change effects)	New	Development of climate change resilient housing models  Provision of green energy	Harare	Government of Zimbabwe
Smart City	Developing a Smart City model for Melfort (Pilot project for a Smart City)	ICT-led city	New	Provision of: <ul style="list-style-type: none"> <li>- a technology-based infrastructure smart environmental management initiatives;</li> <li>- a high functioning public transportation system;</li> <li>- ICT model urban planning</li> </ul>	Harare	Public Private Partnership



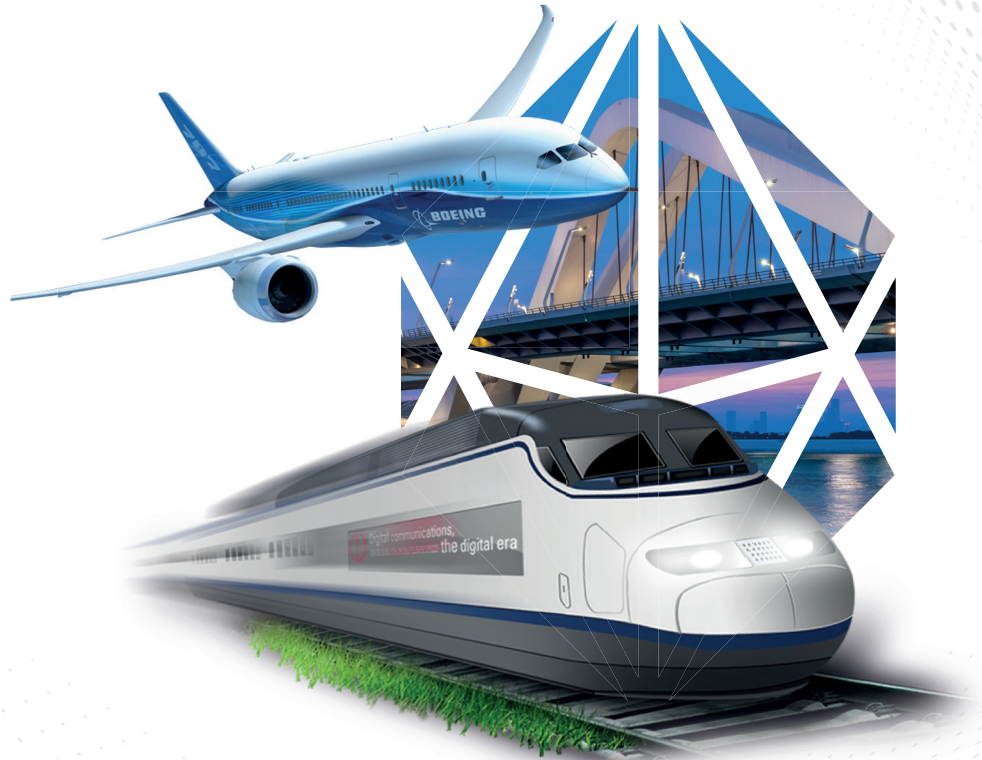
**ZIDA**

ZIMBABWE  
INVESTMENT &  
DEVELOPMENT  
AGENCY

Unearthing **Potential!**

# Transport

---



# TRANSPORT

## Roads and Bridges

	Project	Description	Intention	Length (km)	Cost (million)	Feasibility Study	Remarks
1	Beitbridge - Harare - Chirundu	Part of the North South corridor	Rehabilitation and Dualisation	934km	\$2135	Yes	
2.	Harare Ring Road	Takes transit traffic out of Harare CBD	Construction	110.7km	\$120	Yes	
3.	Bulawayo - Beitbridge	To link the Bulawayo City to the South African markets	Rehabilitation and widening	321.7km	\$320	Yes	Awarded to Katho Civils and South Zambezi JV
4.	Bulawayo - Victoria Falls-Kazungula	Links the country to tourist destinations of Victoria Falls & Hwange, mining and energy sectors as well as providing links to Namibia, Zambia and Botswana	Rehabilitation and widening	510 km	\$610	No	
5.	Harare - Nyamapanda	To enhance trade between Zimbabwe and other SADC and COMESA members	Dualisation of regional trunk road	237km	\$320	In Progress	
6.	Mvurwi - Guruve - Angwa - Kanyemba	To enhance trade between Zimbabwe, Zambia and Mozambique	Construction and Upgrading of regional trunk road	293km	\$250	No	Awarded to Ncube Barrow, Exodus & co. and Inyatsi Construction Consortium
7.	Rutenga - Boli - Sango	To enhance trade between Zimbabwe, SADC and COMESA	Construction and Upgrading	150km	\$120	No	Awarded to Badore Engineer and Palace Group JV
8.	Kwekwe - Nkayi - Lupane	The road connects Harare the capital to Victoria Falls	Upgrading to surfaced	118km	\$130	No	
9.	Birchenough Bridge	Located along the Masvingo-Mutare highway	Construction of a new bridge		\$40	No	
10.	Victoria Falls Bridge	The Bridge links Zambia and Zimbabwe across Zambezi river.	Construction of a new bridge		\$55	No	



# TRANSPORT

## Airports Rehabilitation

Airport	Status	Amount Required \$ (million)			Scope of Work
		Runway	Building	Total	
		40		40	Rehabilitation of runway and installation of AGL (Air Ground Lighting System).
Hwange National Park	Rehabilitation	15		15	Runway Rehabilitation –resurfacing of the runway (4km)
Masvingo	Rehabilitation	15	5	20	Runway: Rehabilitation and 300m extension
Building: Rehabilitation and extension of terminal building.	Links the country to tourist destinations of Victoria Falls & Hwange, mining and energy sectors as well as providing links to Namibia, Zambia and Botswana	Rehabilitation and widening	510 km	\$610	No
Kariba Old Airport	Rehabilitation	2	1	3	Runway rehabilitation and extension of terminal building.
Gweru	Rehabilitation	9,5	0,5	10	Runway: Rehabilitation of runway.
Building: Construction of a new Terminal building	To enhance trade between Zimbabwe, SADC and COMESA	Construction and Upgrading	150km	\$120	No
Buffalo Range	Rehabilitation	65	60	125	Runway: Rehabilitation and extension from 1578m to 4000m
Building: Construction of a new Terminal building	Located along the Masvingo-Mutare highway	Construction of a new bridge		\$40	No
Mutare Grand Reef	Rehabilitation	30	9	39	Rehabilitation of runway, construction of terminal building, aprons and access roads.
Mutare Airport	Greenfield	90	83	173	Runway: Construction of new runway, taxiway and aprons Building: Construction of a new Terminal building and access roads
1. Kariba New Airport	Greenfield	90	83	173	Runway: Construction of new runway, taxiway and apron Building: Construction of a new Terminal building and access roads
1. Beitbridge	Greenfield	100	50	150	Runway: Construction of new runway Building: Construction of a new Terminal building

# TRANSPORT

## Rail Projects: Greenfield Projects

	Project	Estimated Cost US\$
1	Lion's Den to Kafue Rail Link Project	Still to be determined – feasibility in progress
2	Shamva to Moatize Rail Link Project	Still to be determined

ITEM	PROJECT	ACTIVITIES	Cost US\$	BENEFITS/JUSTIFICATION
1	Lion's Den - Kafue	<ul style="list-style-type: none"> <li>• Feasibility Study – Request for Expressions of Interest (Done)</li> <li>• Design (To be done immediately after feasibility study)</li> <li>• Investor Engagement (After completion of designs)</li> </ul>	\$2.5 million Included in the figure above To be known after the design	When complete, the project will open a shorter and alternative route to the Port of Beira for cargo coming from or going to Zambia and Eastern DRC
2	Shamva (Zim) – Moatize (Moza)	<ul style="list-style-type: none"> <li>• Feasibility Study – Request for Expressions of Interest (Done)</li> <li>• Design (To be done immediately after feasibility study)</li> <li>• Investor Engagement (After completion of designs)</li> </ul>	Still to be determined	When complete, the project will open an alternative route to the Indian Ocean through the Port of Nacala in Mozambique's northern province of Nampula.



**ZIDA**

ZIMBABWE  
INVESTMENT &  
DEVELOPMENT  
AGENCY

Unearthing **Potential!**

# Creative Industry

---



## Creative Industry

No.	Project Title	Project Description	Project		Investment	
			Sector	Location	Amount (USD)	Mode
1	Construction National Cultural and Creative Industries Centre (NCCC)	<ul style="list-style-type: none"> <li>Land Acquisition, Architectural Design and Plan for NCCC</li> <li>Equipping the Centre with digital equipment</li> <li>Construction Arts and Culture facility with the following;               <ul style="list-style-type: none"> <li>Office Space</li> <li>Multi-purpose Auditorium performance venue with a carrying capacity of 3000 pax</li> <li>Restaurant with the capability to promote international and traditional cuisine culinary</li> <li>Conference Facilities for workshops and meetings</li> <li>Production Studios (Theatre, Music, Dance, Spoken Word and Fashion)</li> <li>Galleries and Sculpture Park (Exhibition space both indoor and outdoor</li> <li>Resource Centre/Library</li> <li>Open-air performance/ museum space (Amphitheatre for multipurpose activities)</li> <li>Space for Shops</li> <li>Exhibition Facilities</li> <li>Boarding/Accommodation</li> <li>Facilities (Residency and Fellowship Programmes)</li> </ul> </li> </ul>	Arts and Culture  Infrastructure Development	Harare	25 million	PPP/ Joint Venture
2.	Centres of Sporting Excellences / High Performance Centres	<ul style="list-style-type: none"> <li>Setting of state of art high-performance centres in all Provinces</li> <li>Centres should have state of art equipment</li> <li>Setting up of an athlete rehabilitation centres</li> <li>Investment might be in the form of construction of sporting arenas, multipurpose facilities, gymnasium and availing relevant equipment.</li> </ul>	Sport and Recreation	All Provinces	TBA	Joint Venture

## Creative Industry

No.	Project Title	Project Description	Project		Investment	
			Sector	Location	Amount (USD)	Mode
3	Establishment of Multi-purpose Youth Centre	<ul style="list-style-type: none"> <li>Establishment and capacitation of Multipurpose Youth Centre</li> <li>Create office space for Zimbabwe Youth Council</li> <li>Provide renting space for Youth Businesses</li> <li>Establish a co-working space</li> </ul>	Services	Harare Metropolitan Province  Bulawayo Metropolitan Province	TBA	Joint venture
4	Modernising Agriculture Production at Vocational Training Centres with Farming Land	<ul style="list-style-type: none"> <li>Land for Agriculture development</li> <li>The existing Agriculture training and production systems not adequate</li> <li>Need for modern means of Agriculture training production</li> <li>Modern Agriculture machines and equipment needed</li> <li>Appropriate and effective irrigation to be installed</li> <li>Setting up of animal handling and housing facilities</li> <li>Post-harvest and storage facilities to established</li> <li>There is scope to carry out commercial agriculture activities at the training centres</li> <li>Develop staff</li> </ul>	Youth, Sport and Culture	25 VTCs	TBA	Joint Venture
5	Establish a Microfinance facility for CClIs in Zimbabwe	<ul style="list-style-type: none"> <li>Provision of microfinance services</li> <li>Loan products</li> <li>Capital for Infrastructure Development for CClIs</li> </ul>	Arts and Culture	National	10 million	PPP/ Joint Venture
6	Sport for All Programmes	<ul style="list-style-type: none"> <li>Sport for All programmes provide for an enabling environment for participation of all individuals irregardless of skills perfection.</li> <li>Implementation and programming of sport for all programmes may be target based programming meeting the various clientele within communities.</li> </ul>	Sport and Recreation	All Provinces and All District	TBA	Joint Venture

## Creative Industry

No.	Project Title	Project Description	Project		Investment	
			Sector	Location	Amount (USD)	Mode
7	Expansion of Youth Incubation Hubs	<ul style="list-style-type: none"> <li>• There are 9 youth incubation hubs that are at difference levels of production</li> <li>• The hubs in the following sectors               <ul style="list-style-type: none"> <li>o Manufacturing</li> <li>o Horticulture</li> <li>o Animal husbandry</li> <li>o Motor mechanics</li> <li>o Cosmetology</li> <li>o Clothing and technology</li> </ul> </li> <li>• Additional equipment and machinery to upscale operations at               <ul style="list-style-type: none"> <li>a) Mutoko Fruit and Vegetable Processing Hub</li> <li>b) Kaguvi Dairy Hub</li> <li>c) Umguza Dairy Hub</li> <li>d) Phangani Boer Goat</li> <li>e) Zvishavane and Manicaland Motor Mech Hubs</li> <li>f) Clothing Technology Hub in Manicaland</li> <li>g) Midlands Events Management Hub</li> <li>h) Cosmetology Hub in Bulawayo</li> </ul> </li> <li>• Linkages with export markets</li> </ul>	Manufacturing Services Agriculture	All provinces	TBA	Joint venture
8	Setting up facilities for Trainee Incubation: Agro-processing Hubs at Farm based VTCs	<ul style="list-style-type: none"> <li>• Construct facility for Agro-processing</li> <li>• Install appropriate equipment</li> <li>• Train Operations staff Construction of New workshops</li> <li>• Equipping and tooling of the constructed workshops</li> <li>• Develop Staff</li> </ul>	Youth, Sport and Culture	25 VTCs	TBA	Joint Venture

## Creative Industry

No.	Project Title	Project Description	Project		Investment	
			Sector	Location	Amount (USD)	Mode
9	Construction of Kanyemba Arts and Culture Centre (KACC)	<ul style="list-style-type: none"> <li>Land is available Size; 3.2Ha, Architectural Design and Plan for KACC</li> <li>Equipping of the Centre with digital equipment</li> <li>Construction of an Arts and Culture facility with the following facets;               <ul style="list-style-type: none"> <li>--Office Space</li> <li>--Multi-purpose Auditorium performance venue with a carrying capacity of 400 pax</li> <li>--Restaurant with the capability to promote international and traditional culinary cuisine</li> <li>-- solar electrification,</li> <li>--Conference Facilities for workshops and meetings</li> <li>--Production Studios (Theatre, Music, Dance, Spoken Word and Fashion)</li> <li>--Galleries and Sculpture Park (Exhibition space both indoor and outdoor</li> <li>-- Resource Centre/Library</li> <li>-- Open-air performance/ museum space (Amphitheatre for multipurpose activities)</li> <li>--Space for Shops</li> <li>--Exhibition Facilities</li> <li>--Boarding/Accommodation Facilities (Residency and Fellowship Programmes)</li> </ul> </li> </ul>	Arts and Culture  Infrastructure Development	Kanyemba, Mbire, Mashonaland Central	6 million	PPP Joint Venture
10	Upgrading National Sport Stadium in Harare Province	<ul style="list-style-type: none"> <li>Main soccer arena, B soccer arena and hockey stadium already in existence</li> <li>Current renovations being done by through Government of Zimbabwe</li> <li>Pieces of land available suitable for construction of hotels and other such amenities.</li> </ul> Existing facilities need upgrading to meet international standards	Sport and Recreation	Harare	TBA	Joint Venture

## Creative Industry

No.	Project Title	Project Description	Project		Investment	
			Sector	Location	Amount (USD)	Mode
11	Youth Build Zimbabwe construction projects	<ul style="list-style-type: none"> <li>• Equipment and machinery for road repair and maintenance</li> <li>• Equipment and machinery for construction of buildings</li> </ul>	Services-Construction	All provinces	TBA	Joint venture
12	Installation of Renewable energy Systems	<ul style="list-style-type: none"> <li>• Construction of Industrial Biogas Digesters</li> <li>• Installation of Biogas powered electricity generators</li> <li>• Installation of industrial level photo-voltaic panels</li> <li>• Conversion to at least 50% dependence on renewable energy</li> <li>• Develop Staff</li> </ul>	Youth, Sport and Culture	43 VTCs	TBA	Joint Venture
13	Refurbishment and upgrading of Tengenenge sculpture park in Guruve, Mashonaland West	<ul style="list-style-type: none"> <li>• The Park is in existence and is situated on 40.3 Ha of land</li> <li>• Equipping of the Centre with digital equipment</li> <li>• Construction of an Arts and Culture facility with the following facets;               <ul style="list-style-type: none"> <li>-Office Space</li> <li>-Multi-purpose Auditorium performance venue with a carrying capacity of 500 pax</li> <li>-Restaurant with the capability to promote international and traditional culinary cuisine</li> <li>- solar electrification,</li> <li>-Conference Facilities for workshops and meetings</li> <li>-Production Studios</li> <li>--Galleries and Sculpture Park (Exhibition space both indoor and outdoor</li> <li>-- Resource Centre/Library</li> <li>-- Open-air performance/ museum space (Amphitheatre for multipurpose activities)</li> <li>--Space for Shops</li> <li>--Exhibition Facilities</li> <li>--Boarding/Accommodation</li> </ul> </li> <li>• Facilities (International Residency and Fellowship Programmes)</li> </ul>	Arts and Culture	Guruve	5 million	Joint Venture



## Creative Industry

No.	Project Title	Project Description	Project		Investment	
			Sector	Location	Amount (USD)	Mode
14	Tugwi Mukosi One Stop Sport Facility Masvingo Province	<ul style="list-style-type: none"> <li>Area still awaiting final site masterplan.</li> <li>The main attraction is the water body, largest inland water body in the country.</li> <li>The site has huge potential aquatic sport and recreation projects.</li> <li>The area has been marked as a special economic zone</li> <li>Current works being done by the Government</li> </ul>	Sport and Recreation	Tugwi Mukosi	TBA	Joint Venture
15	Youth Economic Empowerment <ul style="list-style-type: none"> <li>Mining</li> <li>Agriculture</li> <li>Tourism</li> <li>Manufacturing</li> </ul>	<ul style="list-style-type: none"> <li>Partnership with youth in various sectors of the economy</li> <li>Youth have mining rights and own mine claims; have access to land for agricultural purposes and others have conservatories for tourism but do not have equipment and adequate capital for their projects to be fully functional</li> <li>25% youth quota has boosted youth access to natural resources in various aspects of the economy hence the huge need for partnerships to enhance their participation in the country's economy</li> </ul>	Agriculture Mining Tourism Manufacturing	All provinces	TBA	Partnerships/ joint ventures
16	Setting up facilities for Trainee incubation: Coach building Hubs at Urban VTCs	<ul style="list-style-type: none"> <li>Construct water based sewerage systems Construct facility for coach building and fabrication engineering</li> <li>Install appropriate equipment</li> <li>Develop staff.</li> </ul>	Youth, Sport and Culture	VTCs: Ruwa, Jairos Jiri, Gweru, Bindura, Masvingo, Chinhoyi, Mutare, Marondera. Chitungwiza	5 million	Joint Venture

## Creative Industry

No.	Project Title	Project Description	Project		Investment	
			Sector	Location	Amount (USD)	Mode
17	Construction of a Multi-purpose Cultural Creative Centre at Tugwi-Mukosi in Masvingo	<ul style="list-style-type: none"> <li>The facility was allocated 10ha of land</li> <li>Equipping of the Centre with digital equipment</li> <li>Construction of an Arts and Culture facility with the following facets;               <ul style="list-style-type: none"> <li>--Office Space</li> <li>--Multi-purpose Auditorium performance venue with a carrying capacity of 1000 pax</li> <li>--Restaurant with the capability to promote international and traditional culinary cuisine</li> <li>-- solar electrification,</li> <li>--Conference Facilities for workshops and meetings</li> <li>--Production Studios (Theatre, Music, Dance, Spoken Word and Fashion)</li> <li>--Galleries and Sculpture Park (Exhibition space both indoor and outdoor</li> <li>-- Resource Centre/Library</li> <li>-- Open-air performance/ museum space (Amphitheatre for multipurpose activities)</li> <li>--Space for Shops</li> <li>--Exhibition Facilities</li> <li>--Boarding/Accommodation Facilities (Residency and Fellowship Programmes)</li> </ul> </li> </ul>	Arts and Culture	Masvingo	6m	Joint Venture
18	Kanyemba One Stop Sport Facility. Mashonaland Central Province	<ul style="list-style-type: none"> <li>Development of multipurpose one stop sport facility in Kanyemba</li> <li>The facility will cover gymnasium, sports fields, amphitheatres, gyms, sport retail shops etc</li> <li>The area has been marked as a special economic zone</li> <li>Current works being done by the Government</li> </ul>	Sport and Recreation	Kanyemba	TBA	Joint Venture

## Creative Industry

No.	Project Title	Project Description	Project		Investment	
			Sector	Location	Amount (USD)	Mode
19	Establishment of Water Bottling Company at Vumba Training Centre	<ul style="list-style-type: none"> <li>Setting up of water bottling company in Vumba</li> <li>Ground water source secured</li> <li>Equipment and machinery for processing and packaging of mineral water</li> <li>Delivery vehicles</li> </ul>	Manufacturing	Vumba Training Centre, Manicaland Province	TBA	Joint Venture
20	Transforming the Tourism and Hospitality Training at VTCs	<ul style="list-style-type: none"> <li>Setting up of state of art hospitality facilities which include state of art hotel</li> <li>Develop staff</li> </ul>	Youth, Sport and Culture	10TCs	TBA	Joint Venture
21	Construction Binga Arts and Culture Centre (BACC)	<ul style="list-style-type: none"> <li>Land Acquisition, Architectural Design and Plan for BACC</li> <li>Equipping the Centre with digital equipment</li> <li>Construction of an Arts and Culture facility with the following;               <ul style="list-style-type: none"> <li>--Office Space - Administration</li> <li>--Multi-purpose Auditorium performance venue with a carrying capacity of 300 pax</li> <li>-- solar electrification,</li> <li>Restaurant with the capability to promote international and traditional culinary cuisine</li> <li>--Conference Facilities for workshops and meetings</li> <li>--Production Studios (Theatre, Music, Dance, Spoken Word and Fashion)</li> <li>--Galleries and Sculpture Park (Exhibition space both indoor and outdoor</li> <li>-- solar electrification,</li> <li>-- Resource Centre/Library</li> <li>-- Open-air performance/ museum space (Amphitheatre for multipurpose activities)</li> <li>--Space for Shops</li> <li>--Exhibition Facilities</li> <li>--Boarding/Accommodation Facilities (Residency and Fellowship Programmes)</li> </ul> </li> </ul>	Arts and Culture  Infrastructure Development	Binga	5 million	PPP/ Joint Venture

## Creative Industry

No.	Project Title	Project Description	Project		Investment	
			Sector	Location	Amount (USD)	Mode
22	Development of a Sport Arena in Victoria Falls, Matabeleland North Province	<ul style="list-style-type: none"> <li>Development of a multipurpose sport arena</li> <li>To have multi discipline sporting and recreational facilities</li> <li>To have an antidoping facility</li> <li>Sport retail sector</li> </ul> Creation of a sport acclimatization hub for National Teams	Sport and Recreation	Victoria Falls	TBA	Joint Venture
23	Construction of Low-Cost Youth Housing	<ul style="list-style-type: none"> <li>Undeveloped land offered to the youth by various Local Authorities already available</li> <li>Discussions progressing well to have the land titles under the Zimbabwe Youth Council</li> <li>A Youth Committee of Experts in construction (Architects, Quantity Surveyors, Engineers, etc) already in place.</li> </ul>	Youth Development and Economic Empowerment	Harare and Bulawayo	TBA	Joint Venture
24	Modern ICTs for VTCs	<ul style="list-style-type: none"> <li>Installation of new ICT infrastructure</li> <li>Establishing computer laboratories</li> <li>Develop Staff</li> </ul>	Youth, Sport and Culture	43 VTCs	TBA	Joint Venture
25	CCIs Capacity Building and development	<ul style="list-style-type: none"> <li>Classification, Standardization and Certification of CCI operators as a critical and highly skilled human capital in Zimbabwe</li> <li>Experience for certification' programme by institutions of higher learning to empower skilled and experienced artists acquire formal qualifications</li> <li>Retooling and Digitization of CCI equipment in line with Global trends and best practises</li> </ul>	Arts and Culture	National	2.5 million	International Cooperation, Technical Expertise and Equipment

## Creative Industry

No.	Project Title	Project Description	Project		Investment	
			Sector	Location	Amount (USD)	Mode
26	National Sport Academy, Mashonaland Central Province	<ul style="list-style-type: none"> <li>Project still under phase 1</li> <li>Located at Bindura University for Science Education</li> <li>Land allocated covering over 15 hectares</li> <li>Suitable for stadium, athletes pavilion, sport lab and testing facility.</li> <li>Room for expansion towards creation of a hotel and other sporting amenities.</li> </ul> <p>Current works being done by the Government</p>	Sport and Recreation	Bindura	TBA	Joint Venture
27	Waste Disposal and Recycling Plants	<ul style="list-style-type: none"> <li>Pilot project done under the Zimbabwe Sunshine Group in the Harare Show Grounds.</li> <li>Land for the main project identified, though the allocation is pending.</li> <li>Youth experts in the sector identified.</li> </ul>	Youth Development and Economic Empowerment	Harare, Bulawayo and Gweru	TBA	Joint Venture
28	Upgrading Staff and Trainees' Housing at VTC	<ul style="list-style-type: none"> <li>Construction of staff housing</li> <li>Construction of Trainee accommodation</li> </ul>	Youth, Sport and Culture	43 VTCs	TBA	Joint Venture
29	Construction of a Music Studio	<ul style="list-style-type: none"> <li>Land Acquisition, Architectural Design and Plan for BACC</li> <li>Equipping the Centre with digital equipment</li> <li>Arts and Culture facility with the following facets;               <ul style="list-style-type: none"> <li>--Construction of a music studio with the following facets;                   <ul style="list-style-type: none"> <li>-- Office Space</li> <li>-- 5 Booths Music Production Studios</li> </ul> </li> <li>-- Open-air performance/ Sculpture Park space (Amphitheatre for multipurpose activities)</li> <li>-- Resource Centre/Library</li> </ul> </li> </ul>	Arts and Culture	Mutare, Manicaland Province	1.5 million	Sole/Individual/ Company investment

## Creative Industry

No.	Project Title	Project Description	Project		Investment	
			Sector	Location	Amount (USD)	Mode
30	Chitungwiza Aquatic Complex, Mashonaland East Province	<ul style="list-style-type: none"> <li>The existing infrastructure is in absolute state</li> <li>The biggest aquatic facility in the country</li> <li>The Facility if resuscitated has the capacity to host regional and international events.</li> <li>The facility has a lot of other amenities including a large hall.</li> <li>Facility owned by the Government</li> </ul>	Sport and Recreation	Chitungwiza	TBA	Joint Venture
31	Youth Radio Station	<ul style="list-style-type: none"> <li>Statutory Instrument that allows for youth to register and run a radio station available</li> </ul>	Youth Development and Economic Empowerment	Harare	TBA	Joint Venture
32	Upgrading the water Reticulation Systems at VTCs	<ul style="list-style-type: none"> <li>Establish dams and boreholes</li> <li>Install the pumping systems powered by renewable energy</li> <li>Revamp the water supply systems</li> </ul>	Youth, Sport and Culture	43 VTCs	TBA	Joint Venture
33	Digital Creativity	<ul style="list-style-type: none"> <li>Cultural and Creative Industries' Digitisation</li> <li>Artificial Intelligence</li> <li>Market concentration</li> <li>Cultural and Creative entrepreneurs</li> <li>Intellectual Property Rights</li> </ul>	Arts and Culture	National	10 million	Joint Venture
34	Setting up of Sport and Recreation Industries	<ul style="list-style-type: none"> <li>Setting up of sport sectorial industries</li> <li>Setting up of companies and industries that manufacture sporting equipment and gear and paraphernalia.</li> <li>Citing high demand of replica jerseys and other sporting regalia and equipment.</li> <li>There is an steady increase in community sport and recreation clubs hence creating demand for sporting equipment.</li> </ul>	Sport and Recreation	National	TBA	Joint Venture

## Creative Industry

No.	Project Title	Project Description	Project		Investment	
			Sector	Location	Amount (USD)	Mode
35	Establishing Modern Workshops at Provincial VTCs	<ul style="list-style-type: none"> <li>Construction of New workshops</li> <li>Equipping and tooling of the constructed workshops</li> <li>Develop Staff</li> </ul>	Youth, Sport and Culture	43 VTCs	TBA	Joint Venture
36	Traditional Herbs and medicine Exploration, Conservation and Preservation	<ul style="list-style-type: none"> <li>Research and Product Development</li> <li>Exploration and preservation equipment</li> <li>Composed of tangible and intangible knowledge on herbs.</li> <li>Current exploration and research is being carried out in liaison with the National Chiefs Council and Ministry of Local Government.</li> </ul>	Arts and Culture	Gokwe South, Midlands Province	500 000	Joint Venture
37	Resuscitation of Provincial Sport facilities, All Provinces	<ul style="list-style-type: none"> <li>Renovation of Provincial Stadia into world class facilities</li> <li>Setting up of a Provincial Sporting Hub facility</li> <li>Existing Stadia Facilities are in bad state with absolute infrastructure</li> </ul>	Sport and Recreation	All Provinces	TBA	Joint Venture
38	Setting up facilities for Trainee incubation: ICTs and Electronics Hubs at selected VTCs.	<ul style="list-style-type: none"> <li>Construct facility for ICTs and Electronics</li> <li>Install appropriate equipment</li> <li>Train operations staff</li> </ul>	Youth, Sport and Culture	VTCs	TBA	Joint Venture
39	Development of Film Production Locations	<ul style="list-style-type: none"> <li>Location for documentary or movie production.</li> <li>Prestine Wildlife and Expansive land with natural in-situ features</li> <li>Very good Climate for different locations.</li> <li>Proximity to the vast Mighty Zambezi River</li> <li>Provides exotic Film extras with exotic languages and cultures</li> <li>Availability of technical expertise.</li> <li>Indigenous people with local area knowledge and guides on scenery.</li> </ul>	Arts and Culture  Tourism  Wildlife Conservation	Binga, Hwange, Lupane, Matabeleland North, Mbire (Mashonaland Central), Chiredzi (Masvingo)	Tax incentives Rebate	FDI, Co-Production, Joint Venture

## Creative Industry

No.	Project Title	Project Description	Project		Investment	
			Sector	Location	Amount (USD)	Mode
40	Establishment of a Sport and Recreation Scheme	<ul style="list-style-type: none"> <li>Development of a sport and recreation scheme to cater for athletes' welfare: During retirement</li> <li>Unforeseen event</li> <li>Death</li> <li>Medical coverage</li> </ul>	Sport and Recreation	National	TBA	Joint Venture
41	Setting up facilities for Trainee incubation: Mining and Mineral processing	<ul style="list-style-type: none"> <li>Construct facility for Mining and Mineral processing</li> <li>Install appropriate equipment</li> <li>Train operations staff</li> </ul>	Youth, Sport and Culture	VTCs: Guyu, Chaminuka, Kaguvi, Shurugwi, Ngezi	TBA	Joint Venture
42	Masvingo Cultural and Cultural Industries Multi-purpose Facility (Dual Stage and Gallery)	<ul style="list-style-type: none"> <li>Land Acquisition, Architectural Design and Plan for MCCIsMF</li> <li>Equipping the Centre with digital equipment</li> <li>Construction Arts and Culture facility with the following;               <ul style="list-style-type: none"> <li>-Office Space</li> <li>- Open-air performance/ museum space (Amphitheatre for multipurpose activities)</li> <li>-Equipment and accessories                   <ul style="list-style-type: none"> <li>-- solar electrification,</li> </ul> </li> <li>Exhibition events</li> <li>Performance events</li> </ul> </li> </ul>	Arts and Culture	Masvingo	2.5 Million	Joint Venture PPP
43	Dzimbabwe Cultural Heritage Enterprise	<ul style="list-style-type: none"> <li>Refurbishment/upgrading cultural and heritage centre</li> <li>Capacity building personnel and Cultural Creative Industry practitioners with entrepreneurship skills.</li> <li>Cultural Creative exhibitions</li> </ul>	Arts and Culture Cultural Tourism	Masvingo	1.5 million	Joint Venture



## Creative Industry

No.	Project Title	Project Description	Project		Investment	
			Sector	Location	Amount (USD)	Mode
44	Establishment of Provincial Cinema/s	<ul style="list-style-type: none"> <li>Land Acquisition, Architectural Design and Plan for Cinemas</li> <li>Digital equipment</li> <li>Construction of state-of-the-art cinemas</li> <li>Equipment and furniture</li> <li>Currently only Harare and Bulawayo have Cinemas</li> </ul>	Arts and Culture	Midlands Manicaland Matabeleland North Mat	10 million	Joint Venture PPP
45	Establishment of Cultural Creative Incubation Hubs in all provinces	<ul style="list-style-type: none"> <li>-Construction of incubation hub infrastructure facilities</li> <li>-Development of education material for the incubation</li> <li>-Establishment of Savings and Investments vehicles for arts and cultural creative practitioners</li> <li>-Creation of platforms for social and Business networking</li> <li>-Financing of cultural creative incubation hubs</li> <li>-Capacity building of cultural creative industry practitioners</li> <li>-- Beneficiation of cultural creative goods and services</li> <li>-infrastructure and logistics networks for movement of cultural creative goods and services</li> <li>-Promoting entrepreneurship development</li> </ul>	Arts and Culture	All the 10 Provinces	1.5 million	Joint Venture
46	Upgrading of Chambuta Cultural Creative Centre	<ul style="list-style-type: none"> <li>Upgrade of facility</li> <li>Fencing</li> <li>Musical kit equipment</li> <li>Training</li> </ul>	Arts and Culture	Chiredzi Masvingo	1.5 Million	Joint Venture

## Creative Industry

No.	Project Title	Project Description	Project		Investment	
			Sector	Location	Amount (USD)	Mode
47	Capacitation of Zimbabwe Fashion Council	<ul style="list-style-type: none"> <li>The council is already in existence</li> <li>Value Chain Analysis and Addition;</li> <li>--Textile Design, manufacturing, Distribution, marketing, retailing, advertising, and promotion of all types of apparel</li> <li>--Institutionalisation and Standardization of the Fashion Council</li> <li>--Funding, resource mobilization and Training</li> <li>--Garment, Accessories and Apparel manufacturing</li> </ul>	Arts and Culture	National	3 million	International Cooperation and Technical Expertise
48	National Arts and Culture Festival	<ul style="list-style-type: none"> <li>The National Arts and Culture Festival amongst many interventions and initiatives is a medium for celebrating Global Cultural Diversity with the aid of CCIs.</li> <li>Cultural Exchange Programme</li> <li>Financing</li> <li>Cultural Diversity</li> <li>International participation</li> <li>Branding and Sponsorship</li> <li>Promotion and Marketing</li> <li>Education and Training</li> <li>Capacity Building</li> <li>Community Development</li> <li>Innovation and emerging technologies</li> <li>Youth Leadership and Civic Engagement</li> <li>Strategic Urban Development</li> </ul>	Arts and Culture  Cultural Tourism	Harare	2 million	International Cooperation PPP

## Creative Industry

No.	Project Title	Project Description	Project		Investment	
			Sector	Location	Amount (USD)	Mode
49	Bulawayo Arts and Culture Festival	<ul style="list-style-type: none"> <li>• Strategic Urban Development</li> <li>• Cultural Diversity</li> <li>• Financing</li> <li>• International participation</li> <li>• Branding and Sponsorship</li> <li>• Promotion and Marketing</li> <li>• Education and Training</li> <li>• Capacity Building</li> <li>• Community Development</li> <li>• Innovation</li> <li>• Youth Leadership and Civic Engagement</li> </ul>	Arts and Culture	Bulawayo	2 million	International Cooperation
50	Harare International Festival of the Arts	<ul style="list-style-type: none"> <li>• HIFA, is an annual international arts festival that encompasses five main disciplines:               <ul style="list-style-type: none"> <li>---music, theatre, fine arts, dance and spoken word.</li> </ul> </li> <li>• HIFA began in 1999 and since then has taken the Zimbabwean and Southern African arts scene by storm.</li> <li>• The festival showcases the best of Zimbabwean performances and fine arts while at the same time staging and exhibiting the most exciting and creative international and regional performances.</li> <li>• Each year, HIFA announces a theme that drives the artistic policy of the festival</li> <li>• However, HIFA failed to take place since 2019 due financial constraints</li> </ul>	Arts and Culture	Harare	2 million	International Cooperation and Finance

## Creative Industry

No.	Project Title	Project Description	Project		Investment	
			Sector	Location	Amount (USD)	Mode
51	Centre for Cultural Development Initiatives (CCDI) and Great Limpopo Cultural Fair (GLCF)	<ul style="list-style-type: none"> <li>Great Limpopo Cultural Fair (GLCF), is an annual international arts and culture festival</li> <li>It seeks to promote culture, tourism and sustainable community development</li> <li>Organisers eventually wish the Festival to be adopted by other communities in Trans frontier Conservation Areas in the region.</li> <li>GLCF pursues to establish a multi-cultural centre which will include the construction of chalets for residency or fellowships, a research centre, conference facilities, a campsite, tents, borehole, solar electrification, office furniture, laptops and computers, field equipment like cameras and a 4x4 vehicle</li> </ul>	Arts and Culture	Boli, Mhlanguleni Chiredzi, Masvingo Province	4 million	Joint Venture
52	Victoria Falls Art Fair	<ul style="list-style-type: none"> <li>Given the growth of the Zimbabwean Art Scene and African Art across the world this is an opportunity to an art fair in the city of Victoria Falls.</li> <li>As one of the seven wonders of the world the City of Victoria Falls provides an opportunity for such a venture and it can contribute to the African art eco system.</li> <li>Art Fairs are a driver of cultural tourism and also a driver for cultural economies across the world and Victoria Falls is a hub that can be another Center of Contemporary art in Africa</li> <li>This is an opportunity for Contemporary Art private Galleries and Museums to operate in Zimbabwe. There are very few private galleries and Museums.</li> <li>The growth of the Zimbabwean and African Contemporary art scene provides an opportunity to establish these above mentions initiatives</li> </ul>	Arts and Culture  Visual and Contemporary Art	Victoria Falls	3 million	Joint Venture PPP International Cooperation



**ZIDA**

ZIMBABWE  
INVESTMENT &  
DEVELOPMENT  
AGENCY

Unearthing **Potential!**

# Manufacturing

---



## Profiles Of Listed Opportunities

Item	Company name	Sector	Project location	Investment opportunities available within the sector / company	Current Value Chains (name and briefly explain the status)	Infrastructure available	Intervention (e.g. funding (ZWS), infrastructure development (US\$) etc.)	Current and potential sector/company capacity and job creation	SWOT Analysis (risk, strategies, current status, Partners, targets etc.)
<b>Harare Province</b>									
1	Dorowa Minerals	Fertiliser	Buhera	Capex for refurbishment of phosphate plant			USD 13 million	60-135 000 tons/annum	
2	Zimbabwe Phosphate Ind. (a)Phosphate plant	Fertilizer	Harare	Capex for rehabilitation of sulphuric acid plant			USD13.2 million	35-80% capacity utilisation	
	(b) Phosphoric Acid Plant (medium term)	Fertilizer	Harare	Capex for refurbishment & commissioning of phosphoric acid plant			USD30 million		
3	G & W Industrial Minerals	Industrial Minerals	Rushinga	Mine refurbishment & Limestone beneficiation into agricultural & industrial minerals			USD 500 000	70 000 tons per annum	
4	ZGB	Packaging	Bulawayo	Capex for purchase of a block bottom manufacturing plant for cement packaging			USD2 million	TBA	

## Profiles Of Listed Opportunities

Item	Company name	Sector	Project location	Investment opportunities available within the sector / company	Current Value Chains (name and briefly explain the status)	Infrastructure available	Intervention (e.g. funding (ZWS), infrastructure development (US\$) etc.)	Current and potential sector/company capacity and job creation	SWOT Analysis (risk, strategies, current status, Partners, targets etc.)
<b>Harare Province</b>									
5	Willowvale Motor Industries	Bus/truck	Harare	To refurbish plant and resuscitate motor vehicle assembly			USD 6 million	TBA	
6	Deven Engineering	Bus/Truck	Harare	Plant refurbishment & resuscitation of bus & truck assembly			USD 6 million	TBA	
7	Sunway City	Construction	Harare	To develop an industrial park within a Special Economic Zone to attract FDI			USD 5.5 million	TBA	
8	Dete Ceramics	Construction	Dete	Plant refurbishment & manufacture of bricks & tiles using local clay			USD 2 million		

## Profiles Of Listed Opportunities

Item	Company name	Sector	Project location	Investment opportunities available within the sector / company	Current Value Chains (name and briefly explain the status)	Infrastructure available	Intervention (e.g. funding (ZWS), infrastructure development (US\$) etc.)	Current and potential sector/company capacity and job creation	SWOT Analysis (risk, strategies, current status, Partners, targets etc.)
<b>Midlands Province –</b>									
	(About the Midlands Province)	Cotton to Clothing Value Chain	Dete	<p>Midlands Province boast of 52% of national cotton production.</p> <p>Only ginning is done in the province and exported out of the province as lint.</p> <p>At national level, the uptake of lint is only 30% and 70% is exported in its raw form.</p> <p>The province requires investors in spinning and weaving to produce yarn and cloth.</p>	<p>Cotton to clothing Value chain</p> <p>Only ginning is done in the province by companies such as Cottco, Southern Cotton and Shawasha Cotton Company. The province requires investors in spinning and weaving to produce yarn and cloth. The cotton producing areas of Gokwe have earmarked for Special Economic Zone status and registration of such is still to take off.</p>	<p>Ginneries (source of raw material)</p> <p>Roads (tarred and earth roads)</p> <p>Telecommunication infrastructure both cellular and landline phones.</p> <p>Electricity grid</p>	Funding for investment opportunities identified in the value chain	National ginning capacity is around 500 000 tonnes and Midlands Province accounts for about 40% of national ginning capacity.	<p>-lack of infrastructure for further value addition after ginning</p> <p>-Low production of cotton caused by uncompetitive prices both on the world and domestic markets</p> <p>-Lack of adequate inputs</p> <p>-Erratic rains (crop is rain fed).</p>



## Profiles Of Listed Opportunities

Item	Company name	Sector	Project location	Investment opportunities available within the sector / company	Current Value Chains (name and briefly explain the status)	Infrastructure available	Intervention (e.g. funding (ZWS), infrastructure development (US\$) etc.)	Current and potential sector/company capacity and job creation	SWOT Analysis (risk, strategies, current status, Partners, targets etc.)
<b>Midlands Province –</b>									
9	Caridorn Abrasives	Fertilizer, pharmaceuticals, chemicals, printing and packaging	Midlands Province	Idle capacity due to closure though the company used to be sole producer of its abrasive range of products. 80% of raw materials used by the company are local which include corundum, garnet and fire clay.	<p>-Company's products are strategic as they are used across value chains of all the economic sectors like- engineering, foundry, furniture, motor industry, mines, farms, hospitality industry, etc.</p> <p>The products include water paper, garnet finishing, wide and narrow belts, emery tape, door paper, metal cloth, grinding stones, glass paper, varnish for furniture, grinding discs, sharpening and refractories, among others.</p>	<p>Equipment and machine still in a good state</p> <p>Available work space and premises</p> <p>Connected to the electricity grid and municipal water</p>	<p>USD1 million capital injection required either through joint venture or PPPs to kick start production, for raw materials and paying outstanding debts, plant upgrading and refurbishment</p>	<p>At peak the company employed around 120 people.</p> <p>Its uniqueness meant that it was the only company that produced its range of abrasives in Southern Africa apart from one in South Africa.</p> <p>This enabled it to export to countries like Zambia, Malawi, Tanzania, Kenya, among others.</p>	<p>Viability problems.</p> <p>Loss of market to imports.</p> <p>Working capital challenges</p> <p>Ownership status of the company needs to be resolved</p> <p>Promoting the company's products and safeguarding it from cheap imports as it uses 80% of locally resources in line with the local content strategy.</p>

## Profiles Of Listed Opportunities

Item	Company name	Sector	Project location	Investment opportunities available within the sector / company	Current Value Chains (name and briefly explain the status)	Infrastructure available	Intervention (e.g. funding (Z\$), infrastructure development (US\$) etc.)	Current and potential sector/company capacity and job creation	SWOT Analysis (risk, strategies, current status, Partners, targets etc.)
<b>Midlands Province –</b>									
10	Ferrochrome Value Chain/ Sector	Metals and electrical	Midlands Province	The country is endowed with second largest chrome ore reserves in the world after South Africa. Midlands, by virtue of it lying on the Great Dyke, commands a significant share of the resource.	Currently the major players in the value chain only beneficiate up to high carbon ferrochrome.  Only one smelter has ventured into high value low carbon ferrochrome production. The company is also venturing into micro carbon ferrochrome and will be the first in the country and in Sub Sahara.	Railway connectivity  Well-developed road network  Existing electricity infrastructure	Intervention required is high level mineral beneficiation beyond production of high carbon ferrochrome.  Investment is required in production of low and micro carbon ferrochrome.  There is need to "moving up the value" through investment in production of stainless steel, alloy steel, non-ferrous alloys;  And production of chemicals used in plating, corrosion control, metal finishing, pigments, tanning compounds, wood preservative etc.	The Province account for 90% of the current 264 000 tonnes total national smelting capacity.  The sector has potential to employ thousands of people.	Fluctuating world market prices  Antiquated infrastructure i.e. furnaces  High electricity cost  Lowly automated  High rail costs requiring capacitation of NRZ

## Profiles Of Listed Opportunities

Item	Company name	Sector	Project location	Investment opportunities available within the sector / company	Current Value Chains (name and briefly explain the status)	Infrastructure available	Intervention (e.g. funding (ZWS), infrastructure development (US\$) etc.)	Current and potential sector/company capacity and job creation	SWOT Analysis (risk, strategies, current status, Partners, targets etc.)
<b>Midlands Province –</b>									
11	Lancashire Steel	Metals and Electricals	Kwekwe	The opportunity to import substitute on wire and wire products currently being imported into the country	Iron and steel value chain	Electricity and municipal water connection. Rail linkage Good road network Factory infrastructure	Working capital to a total of 190 000 000	250 jobs to be created	Revitalization of the iron and steel value chain through establishment of new steel making company and the anticipated imminent resuscitation of ZiscoSteel for the supply of raw material, steel billets
12	Sables Chemicals	Fertilizer, pharmaceutical, chemical, printing and packaging	Kwekwe	Production of ammonia gas  Investment partnership for provision of working capital and expertise in its current diversification drive.	Fertilizer Value Chain	Plant and Land	Working capital to a total of 200 000 000	More than 300 jobs will be created as the company expands production and venture into production of sanitation products, dairy and solar.	Working capital challenges  Erratic rains/drought leading low uptake of top dressing fertiliser by farmers  Coal bed methane and natural gas for production of ammonia gas

# Profiles Of Listed Opportunities

Item	Company name	Sector	Project location	Investment opportunities available within the sector / company	Current Value Chains (name and briefly explain the status)	Infrastructure available	Intervention (e.g. funding (ZWS), infrastructure development (US\$) etc.)	Current and potential sector/company capacity and job creation	SWOT Analysis (risk, strategies, current status, Partners, targets etc.)
<b>Matebelend South Province</b>									
13	Beitbridge Juice Company (BBJ)	Food and Drink	Beitbridge	-Stockfeed processing. _Pharmaceutical production factory	Agro Processing Value Chains Oranges	-Digital sorting machine -Solar plant	Capital requirement of 35 million USD.  Project expansion to do the orange plantation on 4000ha	Company has completed working on the EIA certification -Agricultural design plan in place  40% capacity utilization  Employment Creation	Increased supply of oranges to the juice plant and contract farming with the locals
14	Bishopstone	Citrus-Oranges	Beitbridge	-Fruit juice production plant -Digital sorting machine	Supply of Oranges to BBJ	-Conveyor belt sorting plant	7 million USD Funding to do the fruit juice production project	Employment creation	Upgrade will boost orange and orange juice production in the company
15	Toppick Investment	Citrus Production	Beitbridge	-Fruit juice production plant -Digital Sorting plant -Canning plant (beef and lamb) -Stockfeed processing plant	Supply oranges to BBJ	-Milling plant -Digitalized irrigation system	Capital requirement of 4 million USD.  To put more oranges and lemon in the plantation from the current 27000 oranges	Employment creation	Increased Employment  Increased supply of oranges and orange juice

## Profiles Of Listed Opportunities

Item	Company name	Sector	Project location	Investment opportunities available within the sector / company	Current Value Chains (name and briefly explain the status)	Infrastructure available	Intervention (e.g. funding (Z\$), infrastructure development (US\$) etc.)	Current and potential sector/company capacity and job creation	SWOT Analysis (risk, strategies, current status, Partners, targets etc.)
<b>Matabeleland South Province</b>									
16	PPC	Manufacturing Clinker/Cement	Gwanda	-Solar energy plant -Cement production	Construction Industry Supply of Cement	-Clinker production plant	Capital requirement of 2-3 million USD	Upgrade will deal with pollution and ensure environmentally friendly production	Upgrade of the back-filler will eradicate pollutants.
17	Credcorp	Food and Drink -Agro-business	Matopo	-pecan nut production -Potato crisps production -Stockfeed processing	Agro Processing Value Chains -Wheat -Maize -Horticulture	-digitalized state of the art irrigation system -Grain silos	5 Million USD Funding for expansion projects e.g potato value chain to produce potato crisps -pecan nut production	-To produce pecan nuts for export market -To revive and increase production in irrigation schemes - create employment	-Expansion of irrigation schemes to produce pecan nuts for export. -venture into the potato value chain
18	E W & J Kirby T/A Sedgemoor	Food and Drink -Dairy	Plumtree-Bulilima	--Heifer breeding programme -Stockfeed production plant -Upgraded milking palour	Dairy value chain -Supply of milk -Processing milk products i.e cheese	-Milking parlour(now small)	8 Million USD Funding for expansion and upgrade of milking parlour. -Repairs of irrigation equipment -Purchasing of milk tanks	60% capacity utilisation -To increase milk production to 2,5 million litres per annum	-Plans to supply heifer breeding programme with 100 heifers per annum -To increase milk production to 2,5 million litres per annum

## Profiles Of Listed Opportunities

Item	Company name	Sector	Project location	Investment opportunities available within the sector / company	Current Value Chains (name and briefly explain the status)	Infrastructure available	Intervention (e.g. funding (Z\$), infrastructure development (US\$) etc.)	Current and potential sector/company capacity and job creation	SWOT Analysis (risk, strategies, current status, Partners, targets etc.)
<b>Matebelend South Province</b>									
19	Shepco BMA	Metals and Electricals	Bulawayo	Idle capacity due to low demand of company's products. 50% of raw materials used by the company are local	Iron and steel value chain	Infrastructure and machinery readily available.	Working capital to a total of USD588 236	700 jobs to be created	Working capital constraints, influx of cheap imports from China. Resuscitation of closed mines with spur demand of company's products
20	Marvo	Printing and packaging	Bulawayo	Investment in the printing and packaging	Printing and packaging value chain	buildings	Working capital of USD550 000 including capex.	At peak it employs 600 people.	Resuscitation of company to boost printing and packaging sector and provincial GDP
21	G&D Holdings	Textiles and clothing and leather	Bulawayo	They have an established brand which has local demand in the leading retail chain stores in the country. There are opportunities in tannery as well.	Beef to leather value chain	Buildings and machinery	Working capital of USD20 million	Around 3000 employees	Working capital

## Profiles Of Listed Opportunities

Item	Company name	Sector	Project location	Investment opportunities available within the sector / company	Current Value Chains (name and briefly explain the status)	Infrastructure available	Intervention (e.g. funding (Z\$), infrastructure development (US\$) etc.)	Current and potential sector/company capacity and job creation	SWOT Analysis (risk, strategies, current status, Partners, targets etc.)
<b>Matebelend South Province</b>									
22	Footwear & Rubber	Textiles and clothing and leather	Bulawayo	Tannery, prospects of training labourforce	Leather value chain	machinery	Initial capital funding of USD1 200 000.00	Looking for land establish a factory	The company has opportunities of training young labourforce, employ skilled labourforce as well import machinery for production
23	Zimbabwe Hosiery	Textiles and clothing and leather	Bulawayo	Investment in manufacture of socks, legwear and pantihose for women	Textile to Clothing value chain	Infrastructure and machinery	Working capital of USD40 000	At its peak the company can employ up to 300 employees both on full time and parttime.	The company is being choked by cheap imports from South Africa and low demand of its products
24	Primetone Investments	Iron and Steel sector.	Bulawayo	Moulding of iron products and iron castings	Iron and steel value chain	Infrastructure	USD50 000 for retooling	At its peak the company has a potential to employ 250 people	Provision of engineering, iron and steel to the sector and to the country at large
25	Umvumila Industrial Park	Construction	Bulawayo	To develop an industrial park to attract FDI	Designated Special Economic Zone	land	TBA	TBA	Access to regional markets and related incentives



Unearthing **Potential!**

1<sup>st</sup> Floor, ZB Life Towers, Cnr Jason Moyo & Sam Nujoma,  
Harare, Zimbabwe

**Tel:** +263 86 880 02639-42

**Email:** [osisc@zidainvest.com](mailto:osisc@zidainvest.com)

 @zidainvest

 @zidainvest

 zidainvest



[www.zidainvest.com](http://www.zidainvest.com)